

# IT-DUMPS Q&A

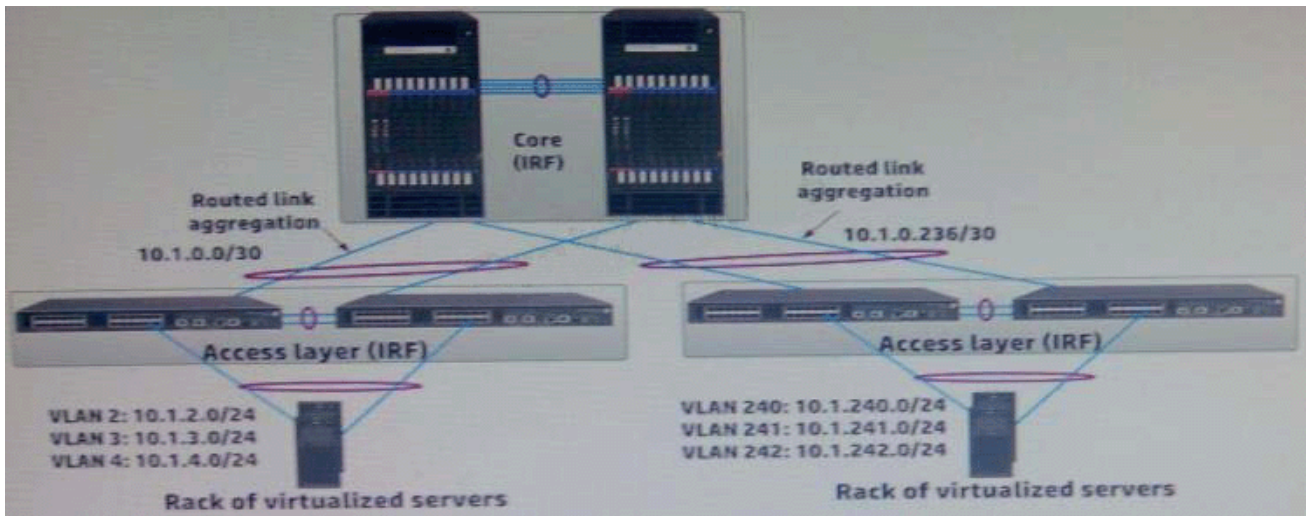
Accurate study guides, High passing rate!  
IT-dumps provides update free of charge in one year!

**Exam** : **HP0-Y50**

**Title** : Architecting HP  
FlexNetwork Solutions

**Version** : Demo

1.Refer to the exhibit.



The exhibit shows a proposed design for a data center network infrastructure. The exhibit shows two racks for simplicity. The data center will actually include more racks.

The customer has these key requirements:

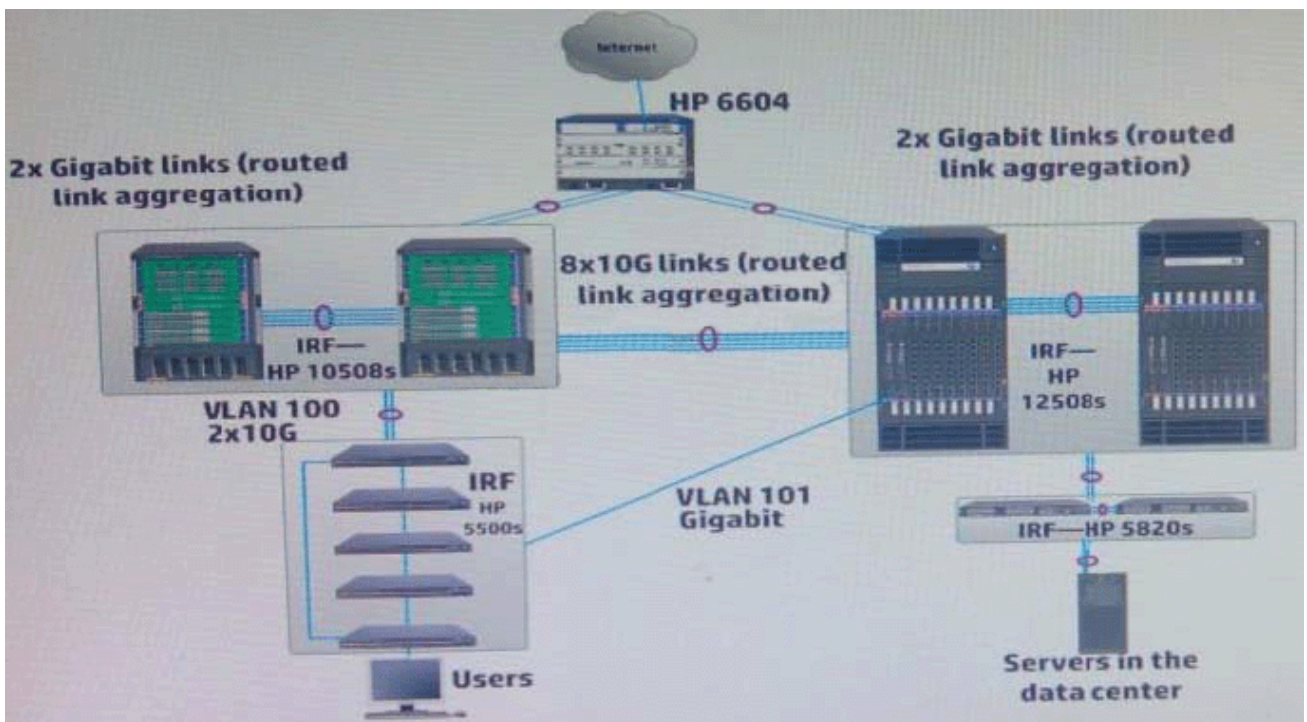
- The customer can scale any application and easily install new hardware that supports that application
- The network supports vMotion for live migration of virtual machine (VMs)

How should the network architect change the proposed design to meet the customer requirements?

- Replace the rack servers with blade enclosures
- Add more links between the servers and the access layer
- Remove routing from the access layer and extend VLANs to multiple racks
- Add a distribution layer between the access layer and the core

**Answer: A**

2.Refer to the exhibit.



The exhibit shows the topology for an enterprise LAN with an on-site data center. The intelligent Resilient Framework (IRF) group of HP 5500 Series switches supports a group of computers that require very high availability to the data center. Therefore, the customer has requested a backup gigabit fiber link implement Open Shortest Path First (OSPF) in a single area.

Which tasks should the network architect complete to ensure that the HP 5500 IRF group selects the correct path to the data center during normal operation?

- A. Change the reference bandwidth on the VLAN 100 interfaces to 20000
- B. Set the cost on the VLAN 100 interfaces to 2 Set the cost for the VLAN 101 interfaces to 80
- C. Change the reference bandwidth on the VLAN 101 interfaces to 1000
- D. Change the VLAN 101 interfaces as silent interfaces
- E. Change the reference bandwidth to 80000 on all routing devices

**Answer: B**

3.A customer has Voice IP (VoIP) phones that support Link Layer Discovery Protocol Media Endpoint Discovery (LLDP-MED). The phone need to receive their VLAN ID using this protocol. The network architect is proposing HP 5500-48G-PoE+EI switches. Each user computer connects to the phone, which then connects to the Ethernet jack. LLDP is enabled on the switch. Each Edge port is trunk port that permits VLAN 10 (the user VLAN) and VLAN 20 (the voice VLAN).

Which other setting recommended on the edge port?

- A. The voice VLAN is enabled
- B. The PVID is set to VLAN 20
- C. LLDP Cisco Discovery Protocol (CDP) compliance enabled
- D. The LLDP voice VLAN ID is set to 20

**Answer: C**

4.A customer wants a simple solution for deploying virtual services at a branch.

Which devices support modules running a VMware ESXi hypervisor? (Select two)

- A. HP 2920 Switch Series
- B. HP MSR30 Router Series
- C. HP 5400 zl Switch Series
- D. HP 7500 Switch Series
- E. HP VSR1000 Virtual Services Routers

**Answer: B,C**

5.What correctly describes one trend that is changing how network architects must design the data center network infrastructure?

- A. Applications are drawing on more and more locally stored data, which causes customers to favor blade servers and blade enclosures
- B. Applications are considering on single, highly available mainframes, driving the need for 10G connections to the server edge
- C. Applications are increasingly virtualized, which requires architects to implement routing at the access layer to segment each rack into its own VLAN
- D. Applications are scaling out across multiple servers, increasing communications between servers distributed across the data center

**Answer: D**