

# IT-DUMPS Q&A

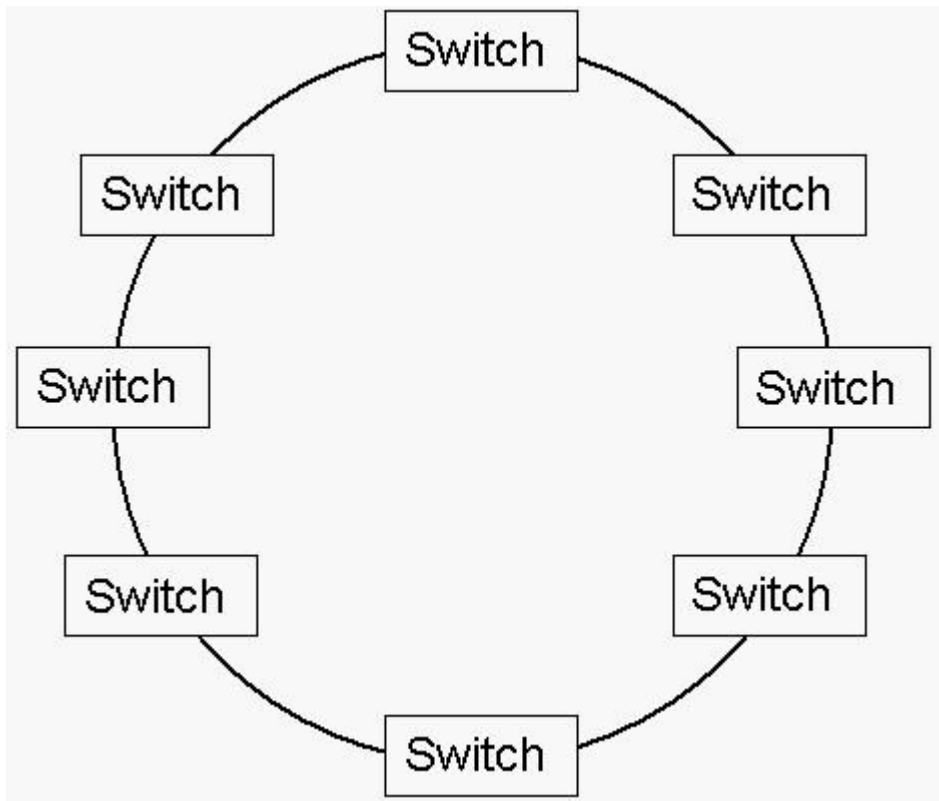
Accurate study guides, High passing rate!  
IT-dumps provides update free of charge in one year!

**Exam : HP0-773**

**Title : Installing & Supporting  
Standard HP SAN  
Environments**

**Version : DEMO**

1.Click the Exhibit button. A customer requests a replacement of B-series switches with M-series switches in the configuration shown in the exhibit. Why is it NOT possible to fulfill the customer's request as a supported solution?



- A.Only Brocade supports a ring topology.
- B.The maximum number of switch hops is three.
- C.A minimum of two inter-switch links is required.
- D.Ring topology requires an uneven number of switches.

**Correct:B**

2.After gathering all customer requirements, you offer a solution. There are different validation levels available to ensure the solution meets or exceeds the customer's needs. Which method is NOT adequate?

- A.Setup a test environment which addresses most key aspects.
- B.Compare the solution against the rules of the SAN Design Guide.
- C.Compare the solution against the rules of the OEM manufacturer.
- D.Choose a supported standard solution of the SAN Design Guide.

**Correct:C**

3.What is the most important consideration if a service level requirement is high availability?

- A.capability to scale incrementally over time as storage and connectivity needs increase
- B.decision to implement a dual redundant SAN
- C.implementation of serverless backup
- D.decision to use iSCSI instead of Fibre Channel

**Correct:B**

4.A customer with HP-UX and Linux servers and EVA storage subsystems wants to integrate all components into one disaster tolerant configuration. What is the best product?

- A.Business Copy
- B.Continuous Access
- C.Secure Path Manager
- D.High Availability Fabric Manager

**Correct:B**

**5.In addition to the SAN Design Reference Guide and the Enterprise Backup Solution Design Guide, what do you need to validate a SAN design with an integrated Enterprise Backup Solution (EBS)? Select TWO.**

- A.SAN Compatibility Matrix
- B.EBS Compatibility Matrix
- C.SAN and EBS Sizer Tool
- D.Backup Sizing Tool
- E.SAN Storage Planner

**Correct:B D**