

IT-DUMPS Q&A

Accurate study guides, High passing rate!
IT-dumps provides update free of charge in one year!

Exam : FM0-301

**Title : Filemaker7 Developer
essentials exam**

Version : DEMO

1. What is the maximum number of files that can be hosted on FileMaker Server 7?

- A. 125
- B. 250
- C. 350
- D. 500
- E. The number is limited only by server hardware.

Answer: A

2. What is the maximum number of characters that can be entered or imported into a text field in FileMaker Pro 7?

- A. 64 thousand
- B. 1 million
- C. 1 billion
- D. 1 trillion
- E. Number of characters is limited only by disk space.

Answer: C

3. If a field in FileMaker Pro 7 has been set to validate Always, which three actions will trigger validation on that field? (Choose three.)

- A. importing data into that field
- B. exporting data from that field
- C. editing data in the field using Instant Web Publishing
- D. clicking into the field, then immediately exiting the field
- E. attempting to change the value of the field using a Set Field[] script step

Answer: ACE

4. A number field in FileMaker Pro 7 called AmountPaid is set to auto-enter the following formula:.

```
Case (
  AmountPaid > AmountDue;
    TextColor (AmountPaid ; RGB (0; 255 ; 0));
  AmountPaid > 0 ;
    TextColor (AmountPaid ; RGB (255 ; 0 ; 0));
  AmountPaid
)
```

The Do not replace existing value of field (if any) option is unchecked.

Which statement is true?

- A. The calculation will only be evaluated the first time a value is entered into AmountPaid .
- B. A user will not be able to manually edit the field once the calculation has been evaluated.
- C. If the value in the AmountDue field is changed, the AmountPaid field will be re-evaluated.

D. The calculation will prevent a user from entering an incorrect value into the AmountPaid field.

Answer: C

5. A database has two tables, Planet and Moon. Moons are related to a single planet and their relationship is set to delete related records in the Moon table when a Planet record is deleted. Which two things happen when the Planet table is deleted from the Tables tab of the Define Database dialog? (Choose two.)

A. All data in the Planet table are deleted.

B. All records in the Moon table are deleted.

C. All records in the Moon table remain unaffected.

D. All records in the Moon table are deleted if the option to "Also remove occurrences of these tables in the graph" was selected when deleting the Planet table.

E. All table occurrences of both Planet and Moon tables are removed if the option to "Also remove occurrences of these tables in the graph" was selected when deleting the Planet table.

Answer: AC

6. Which two statements about relationships are true in FileMaker Pro 7? (Choose two.)

A. The > operator only works using numeric match fields.

B. You can build a relationship using multiple match fields.

C. It is possible to create a valid relationship where one match field is unindexed.

D. A table occurrence must be connected to at least one other table occurrence.

E. When enabling the option, "Allow creation of records in this table via this relationship", only =, >=, <= will properly populate match keys.

Answer: BC

7. Consider a FileMaker Pro 7 database with the following tables and fields:

```
Customer: customer_id, first_name, last_name
Order: order_id, customer_id, order_date
Product_Orders: order_id, product_id, quantity_ordered
Product: product_id, product_name, unit_price
```

Using only Cartesian (cross or x) relationships between occurrences of these tables, sorting if necessary, which two actions can be performed? (Choose two.)

A. determine the mode of the order amount

B. determine the date of the most recent order

C. display all records from the Customer table in a portal

D. create a value list that shows all orders for a chosen customer

E. create a portal to show one record for each product that has ever been ordered

Answer: BC

8. Which three statements are true about field indexing in FileMaker Pro 7? (Choose three.)

- A. Indexing improves the speed at which finds are performed.
- B. Value lists require at least one of any field they reference to be indexed.
- C. To establish a relationship between two fields, both fields are required to be indexed.
- D. A value index, used in establishing relationships, stores up to 60 primary characters or digits per return-delimited line.
- E. Using Unicode or ASCII as the default language by which a field is indexed causes sorts on that field to be case sensitive.

Answer: ABE

9. Click the Exhibit button.

You want to build a FileMaker Pro 7 database that models a business organizational chart. One person may manage no one or many people. One person may be managed by at most one other person.

You want to build the system in such a way that a single layout showing information about a person can display both the name of the current person's manager (if any) and the names of all people managed by the current person.

What is the minimum number of tables you must define in the Tables tab of the Define Database dialog to construct the layout?

Employee

EmployeeID 2

FirstName Pamela

LastName Dreyfus

Department Finance

Title VP Finance

Manager Denise Garcia

Direct Reports

Nancy	Eison	Executive Comptroller	<div style="border: 1px solid black; width: 10px; height: 100px; margin: 0 auto;"></div>
Dennis	Estrella	Executive Assistant	
Luke	Forest	Purchasing Agent	

- A. one
- B. two
- C. three
- D. four

Answer: A

10. Click the Exhibit button

Consider a FileMaker Pro 7 database with two tables called Salesperson and Order, and a relationship between the two tables based on a SalespersonID field. The relationship is configured as shown in the

exhibit. There is a layout called Salesperson Detail, based on the Salesperson table occurrence, with a portal showing Order records via the above relationship.

Which three statements are true? (Choose three.)

Edit Relationship

A relationship defines the set of matching related records in one table for each record in another table. Select the pair of fields to be used to find matching records. To create complex relationship criteria, use additional pairs of fields.

Table: Salesperson

- SalespersonID
- FirstName
- LastName

Table: Order

- OrderID
- SalespersonID
- OrderDate
- OrderAmount

Salesperson = Order

SalespersonID = SalespersonID

Allow creation of records in this table via this relationship ☒ Delete related records in this table when a record is deleted in the other table ☐ Sort records ☐ Specify...

Allow creation of records in this table via this relationship ☒ Delete related records in this table when a record is deleted in the other table ☐ Sort records ☐ Specify...

Cancel OK

- A. Deleting a Salesperson record also deletes all related Order records.
- B. It is possible to create new Order records by importing data into the Salesperson table.
- C. It is possible to create new Salesperson records by importing data into the Order table.
- D. Users may create new Order records by entering data into the portal on the Salesperson Detail layout
- E. It is possible to create a new Salesperson record using a Set Field [] script step in a script that runs in the context of the Order table.
- F. It is possible to create a new Salesperson record by typing into a related salesperson field displayed on

a layout that is based on the Order table.

Answer: DEF

11. Which three statements about field validation are true in FileMaker Pro 7? (Choose three.)

- A. Fields can only be validated by a single criterion.
- B. Field validation warnings may be triggered by scripts.
- C. Users can be prevented from overriding the validation warning.
- D. Users can be presented with a specific message that will see when a field fails validation.
- E. A script can be specified to run when manually entered field data fails validation.

Answer: BCD

12. Consider two FileMaker Pro 7 files, Alpha and Beta, where a table from Beta appears as an externally referenced table occurrence on Alpha's Relationships Graph. Which three statements are true? (Choose three.)

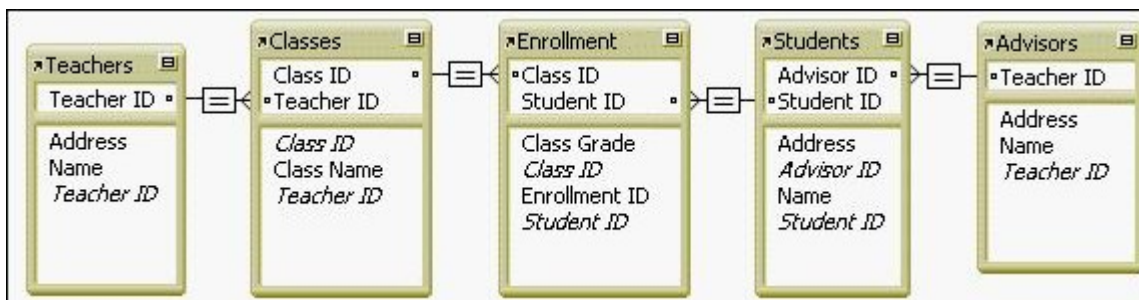
- A. Layouts in Alpha can display data from Beta.
- B. Alpha can contain multiple valid file references to Beta.
- C. It is impossible to lock records in both Alpha and Beta simultaneously.
- D. Layouts from Beta cannot be displayed in the same window as layouts from Alpha.
- E. A table occurrence from Beta is required on Alpha's Relationships Graph in order to call a script in Beta from Alpha.

Answer: ABD

13. Click the Exhibit button.

You have a FileMaker Pro 7 layout based on the table occurrence of Classes. You have a portal showing records from the table occurrence Students.

What happens if you place the field Students::Name into the portal?



- A. The field displays <Field Missing> .
- B. The field displays an enrolled student's name in each row of the portal.
- C. The field displays the first matching student's name in every portal row.
- D. The field displays an enrolled student's name in each row of the portal only if the student name is calculated in the Enrollment table.

Answer: B

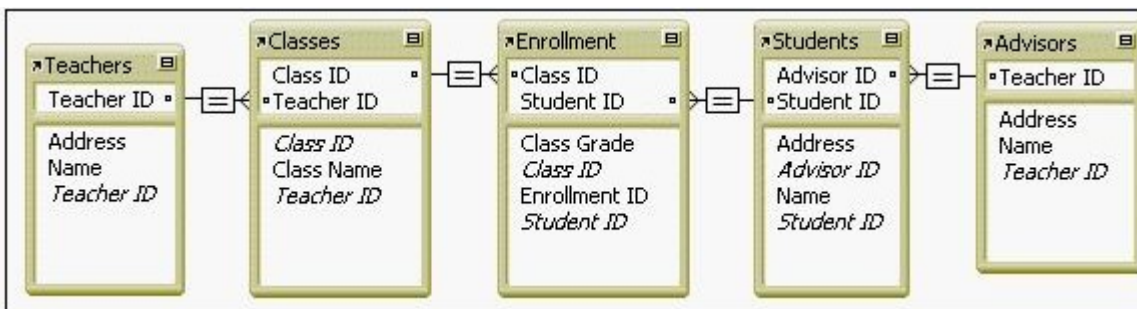
14. Which statement is true in FileMaker Pro 7?

- A. The Save record changes automatically layout option does not apply to users with [Full Access] privileges.
- B. On a layout by layout basis, you can specify whether record changes made in Browse mode will be saved automatically.
- C. On a layout by layout basis, you can specify whether changes made to the layout when exiting Layout mode will be saved automatically.
- D. If the Save record changes automatically option has been turned off for a layout, then users will be prompted to save their changes only when exiting the layout.

Answer: B

15. Click the Exhibit button.

Given the FileMaker Pro 7 Relationships Graph shown in the exhibit, which table occurrence should be assigned to a layout that contains a portal that shows all students for all of a teacher's classes?



- A. Classes
- B. Advisors
- C. Teachers
- D. Enrollment

Answer: C

16. Which three are affected by changing the behavior of a field to navigate to the next field using Tab, Enter and Return in FileMaker Pro 7? (Choose three.)

- A. exiting a record
- B. executing a find
- C. scripted navigation
- D. navigating tab order
- E. continuing a paused script

Answer: ABE

17. You want to sort related records within a portal in a FileMaker Pro 7 database. What two methods

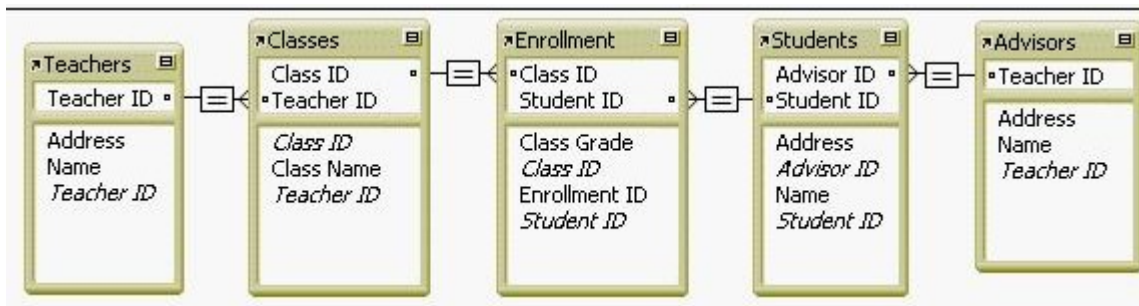
allow you to do this? (Choose two.)

- A. select Sort by in the Edit Value List dialog
- B. select Sort records in the Edit Relationship dialog
- C. select Sort portal records in the Portal Setup dialog
- D. select Sort records for the portal's table occurrence in the Specify Table dialog
- E. select the Records>Sort Records... menu item, then select the portal's table occurrence in the Sort Records dialog

Answer: BC

18. Click the Exhibit button.

On a FileMaker Pro 7 layout based on the table occurrence Teachers, a portal is designed to show all the students based on the table occurrence Students. Which two statements are true about adding a new student in the portal? (Choose two.)



- A. The table occurrence Students must be directly connected to Teachers.
- B. All the relationships from Teachers to Students must be set to be able to create records.
- C. Only the relationship between Enrollment and Students must allow creation of related records.
- D. All the relationships between the table occurrence Teachers and the table occurrence Students must use the = operator.

Answer: CD

19. Given the following formula:

If(DayOfWeek (myDate) = 3 and (myField = 13 or myField = 23) ;

Get (FoundCount) ; Get (TotalRecordCount))

Which two statements are true? (Choose two.)

- A. If myField is 13, the test to see if myField = 23 will not be performed.
- B. If DayOfWeek(myDate) returns 6, neither of the tests involving myField will be performed.
- C. If DayOfWeek(myDate) returns 3 and myField returns 8, then this formula will return the total number of records in the found set.
- D. Regardless of whether the test is true or false, both Get(FoundCount) and Get(TotalRecordCount) will be evaluated during execution of this formula.

Answer: AB

20. Consider the return delimited data in the Contact field of a FileMaker Pro 7 database are:

John Smith

Mary Jones

Julie Hyde

Which three formulas could be used to extract the string Mary Jones from Contact? (Choose three.)

A. Middle (Contact ; 12 ; 10)

B. MiddleValues (Contact ; 2)

C. MiddleWords (Contact ; 3 ; 2)

D. MiddleWords (Contact ; 3 ; 4)

E. MiddleValues (Contact ; 2 ; 1)

Answer: ACE