

IT-DUMPS Q&A

Accurate study guides, High passing rate!
IT-dumps provides update free of charge in one year!

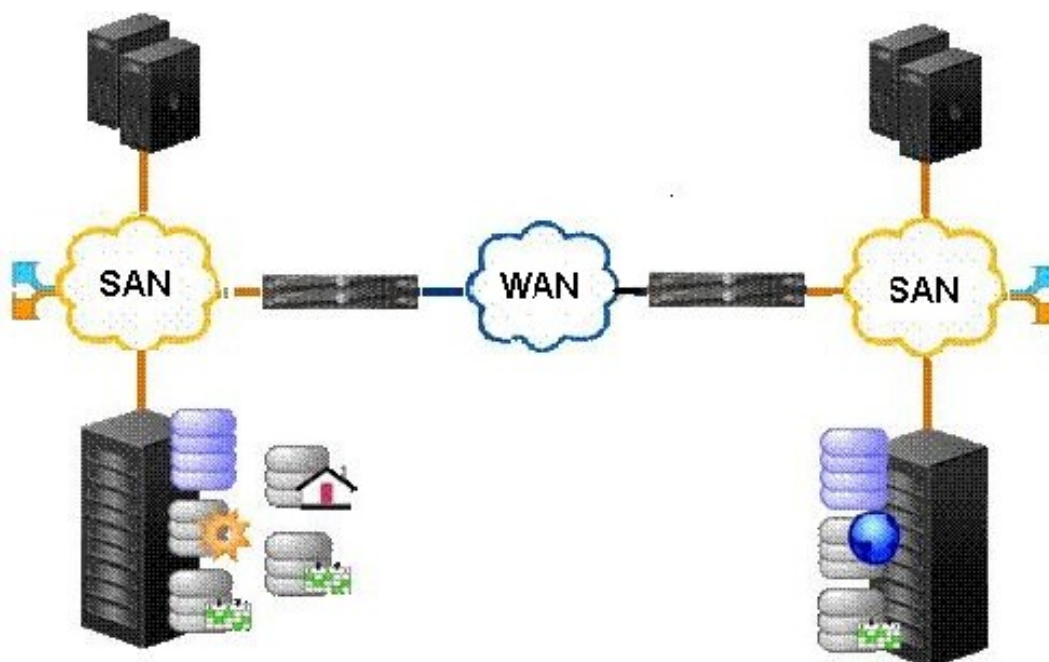
Exam : **E20-805**

Title : EMC Storage and
Information Infrastructure
Expert Exam for Technology
Architects

Version : Demo

Topic 1, Scenario 27

Refer to the Exhibit.



A financial institution is implementing a disaster recovery (DR) solution for their key Oracle databases and other critical data. RecoverPoint has been chosen as the replication technology to use for the DR solution. For maximum protection, the replication uses CLR for all Oracle systems; CRR is used for all other data. The production site uses Sun servers for the Oracle servers and Microsoft Windows Server 2008 hosts for all other data repositories. Storage arrays for the Oracle servers are Symmetrix arrays. All other data and business departments store their data on CLARiiON CX4 arrays.

Recently, the human resources and finance departments were migrated to the DMX to enhance security and performance requirements.

This company also plans to bring in a new acquisition with AIX and VMware servers in the next six months. The AIX servers will be placed on DMX storage and the VMware servers will be placed on CLARiiON storage. Both are slated for CDP protection.

The DR site is located 2,500 km away from the production site. A dedicated T3 WAN link runs at 44 Mb/s. Management and replication traffic will use separate VLANs. Each site contains eight RecoverPoint appliances (RPAs) to maximize the performance and fault-tolerance business requirements. SANTap is used for all Oracle splitting, and CX splitters are used for all other data.

To support the actual replication needs, 12 group sets were created to support the consistency within the Oracle consistency groups. The policies on these sets include an RPO of 15 minutes.

The remainder of the data uses 54 consistency groups with an RPO of two hours.

1. What should be done to improve the performance of the WAN link for replication?

- A. Enable QoS for the VLAN with RecoverPoint traffic
- B. Set the link speed on the RPA to "max throughput"
- C. Enable QoS on the Oracle consistency groups
- D. Configure EtherChannel Link Aggregation for use with the WAN link

Answer: A

2.How would you justify the use of CLARiiON splitters in your design.?

- A. To avoid an excessive number of ITLs created on the SANTap splitter
- B. To take advantage of the VMware vCenter integration for protected virtual machines
- C. To minimize the required hardware purchases if SANTap was used for all splitting
- D. To separate the splitter load to reduce the expected high load on the WAN link

Answer: A

3.What should be done to throttle the amount of data being sent over the T3 line when new servers are brought under RecoverPoint control?

- A. Use the compression slider settings for best compression within the cluster
- B. Use the balance_load CLI commands to distribute the CGs across the RPAs in the cluster evenly
- C. Use the compression slider settings for best performance within the cluster
- D. Use a combination of Distributed Consistency Group and bandwidth limits on the Oracle CGs in the cluster

Answer: A

4.The customer wants to create application-consistent copies of Exchange 2010 and SharePoint 2007 data in a CLR configuration.

What RecoverPoint features would help the customer meet this requirement?

- A. KVSS and VDI integration utilities
- B. KVSS and Oracle integration utilities
- C. SQLSNAP and VDI integration utilities
- D. SQLSNAP and TimeFinder integration utilities

Answer: A

5.A new VMware customer would like to understand RecoverPoint's additional DR protection levels for their virtual machines.

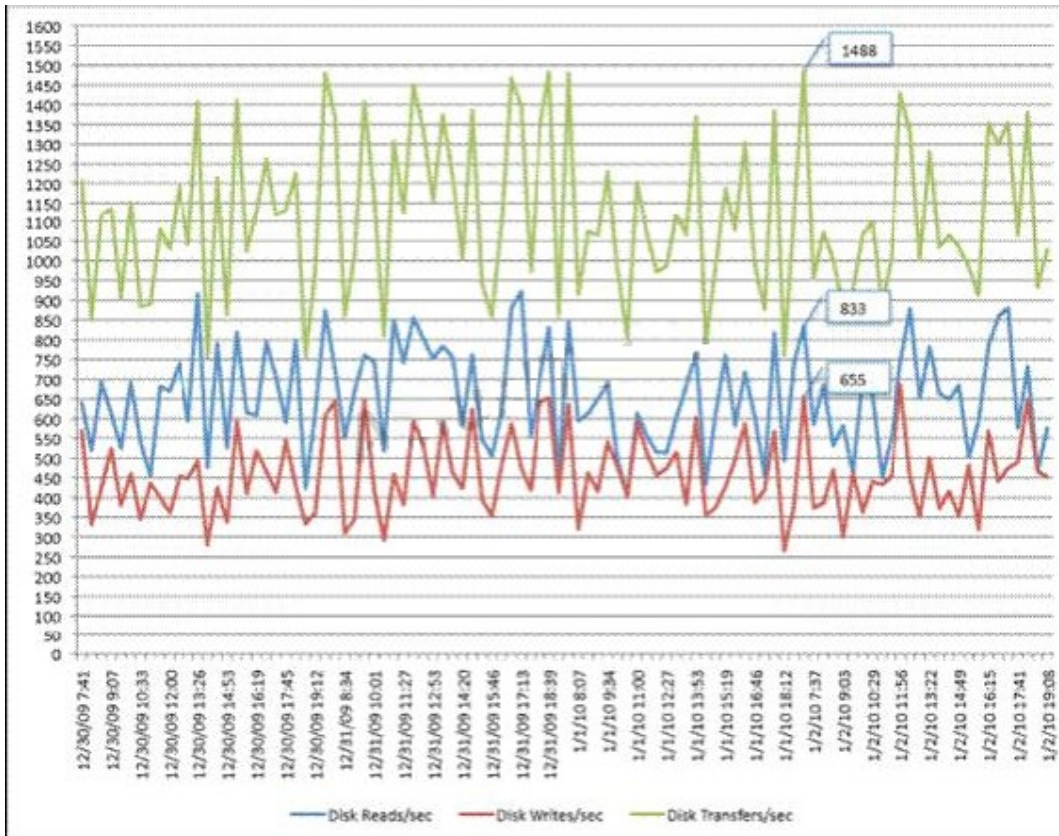
What design alterations should you propose?

- A. Set up the ESX servers by using a CLR protection method and VMware's SRM functionality for automated DR response.
- B. Implement VMware SRM with the existing CDP configuration to provide automated local recovery.
- C. Implement RecoverPoint CDP protection and augment the CDP copy with CLARiiON SnapView technology.
- D. Implement VMware fault tolerance on each VM between the two sites.

Answer: A

Topic 2, Scenario 21

Refer to the Exhibit.



A customer is migrating from their present DAS solution to a new VNX array. As part of the migration, you have been tasked with sizing the Microsoft Exchange 2010 environment, specifically sizing the appropriate IOPS profile for the Exchange mailbox servers.

The customer has profiled the environment and provided you with the data in the exhibit. Each mailbox store contains 100-120 heavy profile users, and each server has 10-12 mailbox stores. Mailbox limits have been put in place at 500 MB per mailbox. Deleted item retention has been left at default values.

6. Which tool helps in analyzing the Exchange environment and provides reports on how the environment compares with current best practices in deploying the Exchange environment?

- A. ExBPA
- B. Microsoft Windows Performance Monitor
- C. loadsim
- D. System Attendant

Answer: A

7. Performance is a major factor in the deployment for the customer. The customer also mentions the need for a backup solution that minimizes the impact to production. Furthermore, the customer wants frequent datastore checks to validate integrity.

Which solution supports the customer's goals?

- A. Use Replication Manager VSS integration and a VNX clone to create a copy of the production LUN.

Perform regular database checks against the copy.

- B. Use Replication Manager and VNX Snap to create a space-efficient copy.

Perform regular database checks using eseutil.

C. Use NetWorker PowerSnap to create a VNX clone.

Perform regular database checks with eseutil.

D. Use NetWorker PowerSnap to create a space-efficient copy with VNX Snap.

Perform regular database checks with eseutil.

Answer: A

8. Click the calculator icon in the upper left corner of the screen.

According to EMC best practices, what is the minimum number of RAID 1 protected 15,000 rpm spindles needed (155 IOPS) to support the performance profile of the Microsoft Exchange database volumes?

A. 8

B. 12

C. 14

D. 18

Answer: D

9. You have been asked to design a long-distance replication solution with MirrorView/S. You want to simulate this Exchange environment and gather the baseline 200 km performance data and additional simulations to perform failover testing.

Which tool should you use?

A. loadgen

B. loadsim

C. EPA

D. JetStress

Answer: A

10. You have planned to implement Replication Manager in this environment to manage the backup requirements.

According to EMC best practices, what prerequisite should you consider?

A. Circular logging must be disabled.

B. Circular logging must be enabled.

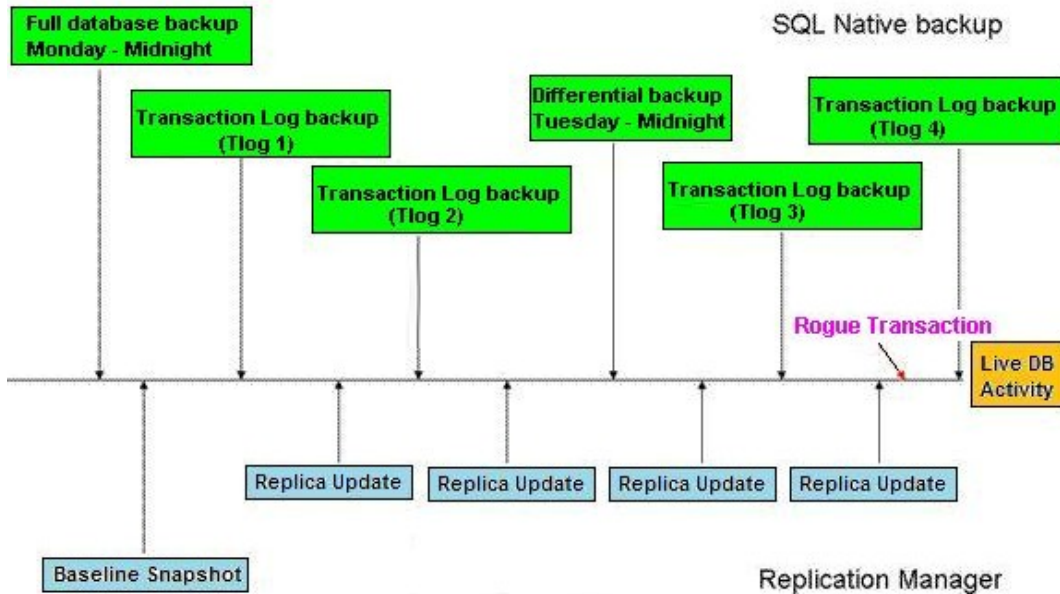
C. Transaction logs and database files must be located on the same volume.

D. "Transaction Log location:" and "System path location:" for each storage group must be different

Answer: A

Topic 3, Scenario 13

Refer to the Exhibit.



Your customer's SQL Server environment uses native SQL backup including more granular backups such as differential backup, as well as transaction logs, to enhance the recovery solution built into the SQL Server.

This customer also has a software development team that currently updates the development SQL databases from the nightly production backups. All SQL environments are hosted on VNX iSCSI LUNs. You propose creating replicas using VNX snaps, as shown in the exhibit. Your proposal includes the implementation of Replication Manager in this environment.

11. How can you leverage the Replication Manager (RM) infrastructure to securely provide copies of production SQL data to the software development team?

- A. Add members from the development team to the RM user list. Through RM, provide these users with access only to specific SQL LUNs. Allow them to schedule their own replications.
- B. Add members from the development team to the RM user list. Allow them to schedule their own replications.
- C. Add members from the development team to the RM user list. Through RM, provide these users with access only to specific SQL LUNs. Allow them to create their own replication jobs.
- D. Add members from the development team to the RM user list. Allow them to create their own replication jobs.

Answer: A

12. As part of a legal discovery request, the customer must make available a functioning copy of the SQL environment as it existed at the time of the TLog3 backups. What would be the most efficient way to restore the SQL server to that point to make the data available?

- A. 1 - Use RM to restore the data to the replica created just before TLog3 backups were completed 2 - Roll SQL forward by applying TLog3 backups
- B. 1 - Restore the Monday SQL Server backup 2 - Apply the Tuesday SQL differential backup 3 - Roll SQL forward by applying TLog3 backups
- C. 1 - Use RM to restore the data to the replica created just after TLog3 backups were completed 2 - Roll SQL backward by subtracting TLog4 backups

D. 1 - Use RM to restore the data to the replica created just after TLog2 backups were completed 2 - Roll SQL forward by applying TLog3 backups

Answer: A

13. After three months of operations, the Monday SQL full backup is consistently running longer than the defined backup window. For compliance purposes a tape backup must be created every Monday. What would be the most secure way to meet the backup window with the least impact to existing processes?

- A. Change the schedule of the baseline snapshot to run before the Monday SQL full backup. Create the tape copy from the baseline snapshot.
- B. Change the Monday SQL full backup to a differential backup. Copy the differential backup to tape. Run a SQL full backup only once a month.
- C. Change the Monday SQL full backup to back up to a new CIFS share in the VNX. Use NDMP to create a tape copy from the CIFS share.
- D. Change the drive count to increase the aggregate performance of the database so that the Monday SQL full backup runs faster.

Answer: A

14. Your customer has an RPO of five hours for accounts receivables during the business hours of 8 a.m. to 6 p.m. The customer's requirement is that a tape copy of a SQL level backup be made to match each five-hour RPO mark. The creation of the SQL level tape copy must not compromise production server performance.

To achieve these goals, Step 1 is to use Replication Manager (RM) to create a snapshot at noon and at 5 p.m.

What other steps are required?

- A. Step 2 - Mount the snap to the mount server Step 3 - Activate the database Step 4 - Perform a SQL-level backup
- B. Step 2 - Mount the snap to the same server Step 3 - Activate the database Step 4 - Perform a SQL-level backup
- C. Step 2 - Mount the snap to the mount server Step 3 - Perform backup of the SQL directories
- D. Step 2 - Mount the snap to the same server Step 3 - Perform backup of the SQL directories

Answer: A

Topic 4, Scenario 15

A midsized company wants to implement a highly integrated IT infrastructure including storage, network, compute, and management software resources.

The IT executives think they spend too much time and effort today building, testing, and optimizing individual components in their infrastructure. They hope to consolidate their existing server-based VDI environment with 950 desktops, 1000 Microsoft Exchange mailboxes, and homegrown Linuxbased applications onto a virtualized infrastructure. The goal is to reduce the current costs of their aging "best of breed" HP, Juniper, Brocade, NetApp, and CLARiiON infrastructure.

The company wants the solution to have the following capabilities:

- Built-in high availability and redundancy
- Offsite disaster recovery with automated failover

- Architectural predictability
- Optimized storage, compute, and network
- Predictable and efficient power and cooling usage
- Calculable VM scaling
- Ease of deployment and use
- Rapid provisioning capabilities
- Simplified management

You have recommended implementing cloud services using Vblock architecture.

15.Which Vblock offering is most appropriate in this scenario?

- A. Vblock 0
- B. Vblock 1
- C. Vblock 1U
- D. Vblock 2

Answer: C

16.Which disaster recovery solution would best fit the customer's needs for the VMFS datastores?

- A. RecoverPoint/SE and VMware Site Recovery Manager
- B. Replicator with VMware Site Recovery Manager
- C. SRDF with VMware Site Recovery Manager
- D. MirrorView/A with VMware Site Recovery Manager

Answer: A

17.How will this solution enable the customer to meet their cost savings objectives?

- A. The new infrastructure will dramatically reduce implementation, testing and management efforts.
- B. The new infrastructure will provide a centralized, multitenant logical architecture.
- C. vStorage APIs will offload work from the hosts, allowing the hosts to scale more efficiently.
- D. The highly available architecture with automated remote replication will reduce the frequency and cost of downtime.

Answer: A

18.Which utility should you recommend to the customer to assist in migrating to the proposed infrastructure?

- A. VMware vCenter Converter
- B. VMware Storage vMotion
- C. SAN Copy
- D. VMware vMotion

Answer: A

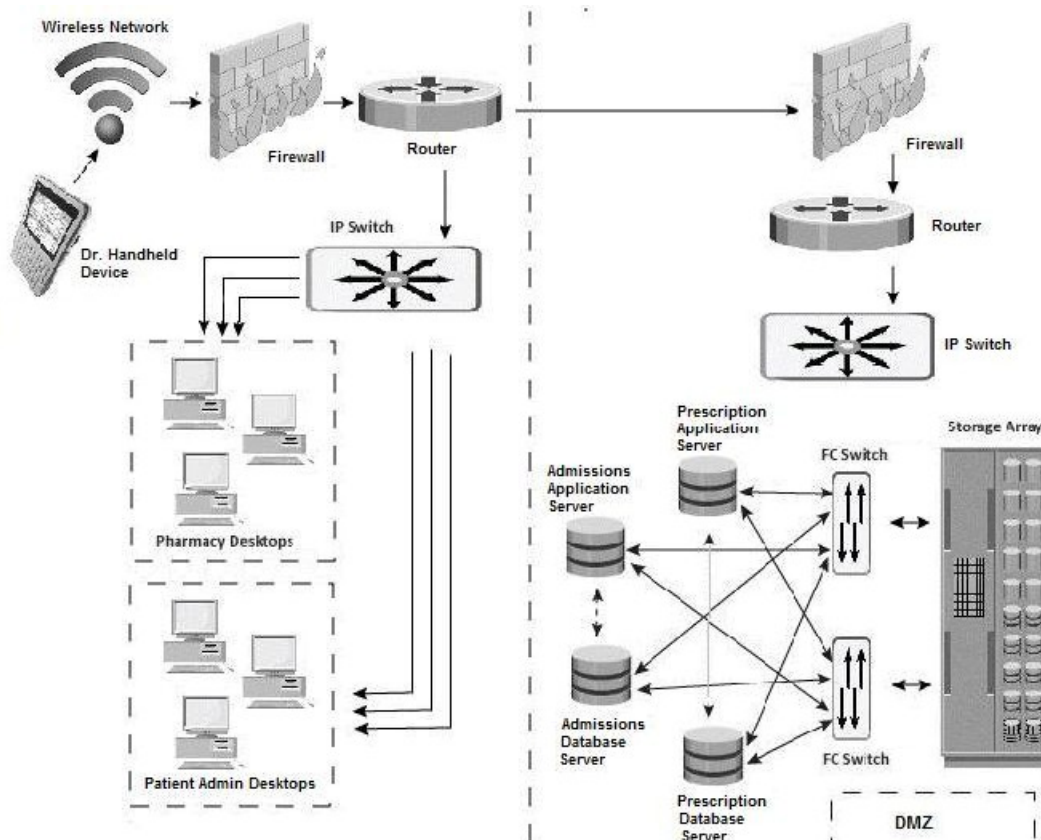
19.What would you recommend to help ease the workload on the customer's support staff?

- A. Provide Remote Operations Services
- B. Upgrade the Advanced Management Pod (AMP) to an HA AMP
- C. Implement an IP aggregation solution
- D. Implement Vblock Traffic Planes

Answer: A

Topic 5, Scenario 17

Refer to the Exhibit.



A small hospital has a three-tier web application that manages the disbursement of medicine to patients.

Key steps in the process include:

- A doctor at the hospital prescribes medicines to a patient using a handheld device.
- The handheld device connects to the prescription application server through a secure connection
- The application authenticates the doctor's credentials.
- A database records the patient number, doctor's name, and prescribed medicine and dose.
- The prescription order is crosschecked with the patient's history. (That history is entered into a separate application and database when the patient is admitted to the hospital.)
- If no problems are detected, the order is sent as an email to the hospital pharmacy.
- The pharmacy dispenses the medicine, and prints a label that is crosschecked by the nurse before the medicine is administered to the patient.

This application, and all applications with which it communicates, must always be available so that medicine can be given to patients. This means that any problems with the hospital network, application servers, database servers, or storage arrays must be identified and resolved immediately.

20. The Security Operations team would like a way to quickly mitigate security vulnerabilities that are reported by networking equipment vendors.

Which solution should be used to identify hospital equipment that is affected by these vulnerabilities?

A. EMC Ionix Network Configuration Manager Network Advisor

- B. EMC Ionix Network Configuration Manager Report Advisor
- C. RSA enVision
- D. Application Discovery Manager

Answer: A