

IT-DUMPS Q&A

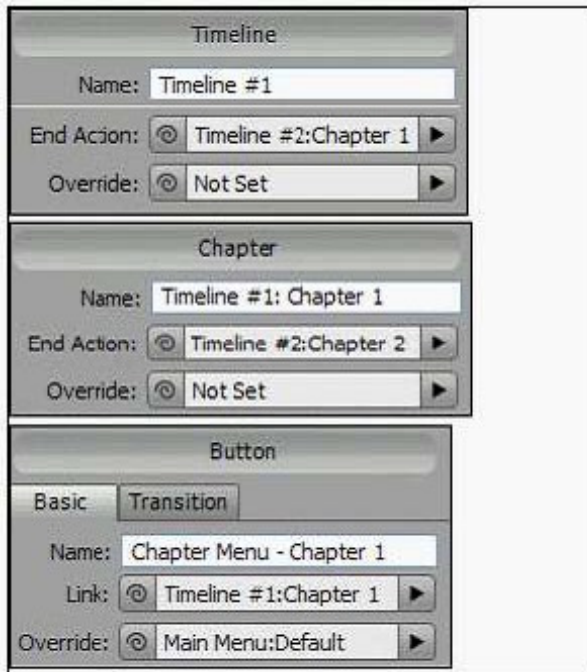
Accurate study guides, High passing rate!
IT-dumps provides update free of charge in one year!

Exam : 9A0-062

**Title : Adobe Encore DVD 2.0 ACE
Exam**

Version : DEMO

1. Click the Exhibit button. You have set up a timeline and menus with features shown in the three Properties panel views in the exhibit. Timeline #1 has only one chapter point. When a viewer clicks the Chapter Menu - Chapter 1 button, Timeline #1 will play starting at Chapter 1 and continue to the end of Timeline #1.



What will happen next?

- A. Timeline #2: Chapter 1 will start to play.
- B. Timeline #2: Chapter 2 will start to play.
- C. The DVD will return viewers to the main menu.
- D. The DVD will return viewers to the chapter menu.

Answer: C

2. You have ten separate timelines that you want to play in different orders from different buttons. You want button one to play the odd numbered timelines and button two to play the even numbered timelines. What should you do?

- A. use two different playlists and assign one to each button
- B. use a combination of end actions and overrides on the buttons
- C. use a combination of end actions and overrides on the timelines

D. use two different chapter playlists and assign one to each button

Answer:A

3. What happens when you set the Video property in the Motion tab of the menu Properties?

A. It sets that video as the first play object.

B. It sets that video as the default object for that menu.

C. It sets that video as the motion background for that menu.

D. It sets that video as the video assigned to animated buttons.

Answer: C

4. You have a menu where users can select the Active Audio Track. When they return to this menu you want the menu to indicate the active audio track they have been listening to. What should you do?

A. use the Specify Link dialog to set the audio track value

B. use the audio timeline to specify the audio channel default

C. use the Menu panel to specify Active Audio Track for the Default button

D. use the Menu panel to specify and override to the Active Audio channel

Answer: C

5. You have created a DVD for a sports team that contains game highlights, player profiles, and other footage. You want to provide options to play different related timelines such as all games versus a particular team. What should you do?

A. create a playlist for each scenario

B. change the button override for each timeline, slideshow etc.

C. create a chapter playlist linked from a series of chapter menus

D. create a series of submenus with buttons linked to timelines containing content for each scenario

Answer:A

6. You create a music video DVD and place each video in its own timeline. You create a Play All button on the main menu that links to the first timeline. You set the end action of each timeline to point to the next timeline until all timelines have played. You also create a button that links to each individual video and returns the user to the main menu after the video ends. Which button navigation option is used by the individual song buttons?

A. First Play

- B. End Action
- C. Standard Link
- D. End Action Override

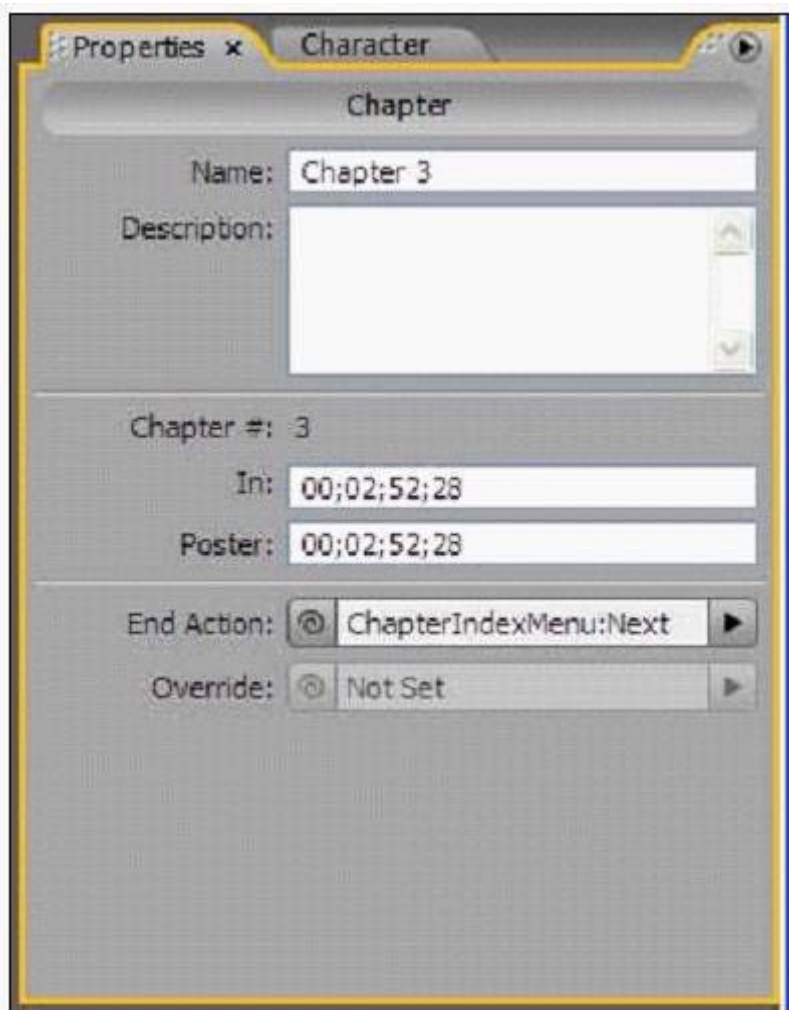
Answer: D

7. Which three statements are true about a chapter playlist? (Choose three.)

- A. A chapter playlist can be used to link multiple timelines.
- B. A chapter playlist can be used to change the end action of a timeline.
- C. A chapter playlist can be used to view content in nonsequential order.
- D. A chapter playlist can be used to change the menu remote of a timeline.

Answer: BCD

8. Click the Exhibit button.Which two statements about setting a poster frame are true? (Choose two.)



- A. You can change the video display of a still image displayed by a video thumbnail.
- B. You can allow the user to select an alternate start point for a chapter from the Chapter Index menu.
- C. You can have your motion menu loop back to the poster frame rather than the beginning of the chapter.
- D. You can create a poster frame by Ctrl + Alt dragging from the chapter marker in the timeline to the desired frame.

Answer: CD

9. You create an interactive kiosk with audio on each menu, set to loop a specified number of times. You want the DVD to return to the main menu from whichever motion menu the user happens to end on after a specified length of time. Which default menu property must you change?

- A. on the Basic tab of the menu Properties panel, change Override for each menu to navigate back to the main menu
- B. on the Basic tab of the menu Properties panel, change End Action for each menu to navigate back to the main menu
- C. on the Motion tab of the menu Properties panel, specify a time for Duration and on the Basic tab specify an end action
- D. on the Motion tab of the menu Properties panel, for each menu, unclick Hold Forever and on the Basic tab specify an end action

Answer: D

10. What happens when you set a Menu Remote property to Return to Last Menu?

- A. It overrides the Timeline End Action.
- B. It changes the project Title Button setting.
- C. When the timeline ends, the DVD displays the last chapter submenu.
- D. Pressing the Menu button on a remote control takes the viewer to the previously viewed menu.

Answer: D

11. You create a training video describing factory processes from several divisions within the same factory. Currently all content, including several timelines, link back to the main menu. As you test your DVD, you decide to change the navigational structure to make it easier for the end user to watch content for each division independently. You add four submenus with links from the main menu, one for each division. After the user navigates to the submenu and clicks on one of the buttons to play a timeline, you want the user to return to the submenu, not the main menu. Which timeline property should you change?

- A. Override
- B. End Action
- C. Menu Remote
- D. Return to Last Menu

Answer: B

12. Click the Exhibit button. Your timeline has a main video clip plus three video clips that you are using as references for video chapter buttons. You want to make sure that when the main video reaches its last frame, that it does not continue into the three extra clips.

Which end action should you set?



- A. an end action for chapter 1
 - B. an end action for chapter 4
 - C. an end action for chapter 5
 - D. an end action for the timeline
- Answer: B

13. You want to create a button on a menu that links to another menu if the user navigates to the button, without having to activate the button. What should you do?

- A. set the button to Auto Activate
- B. set the button to have a link type of Next
- C. set the menu to have a loop time of None
- D. set the menu to have a loop time of Forever

Answer: A

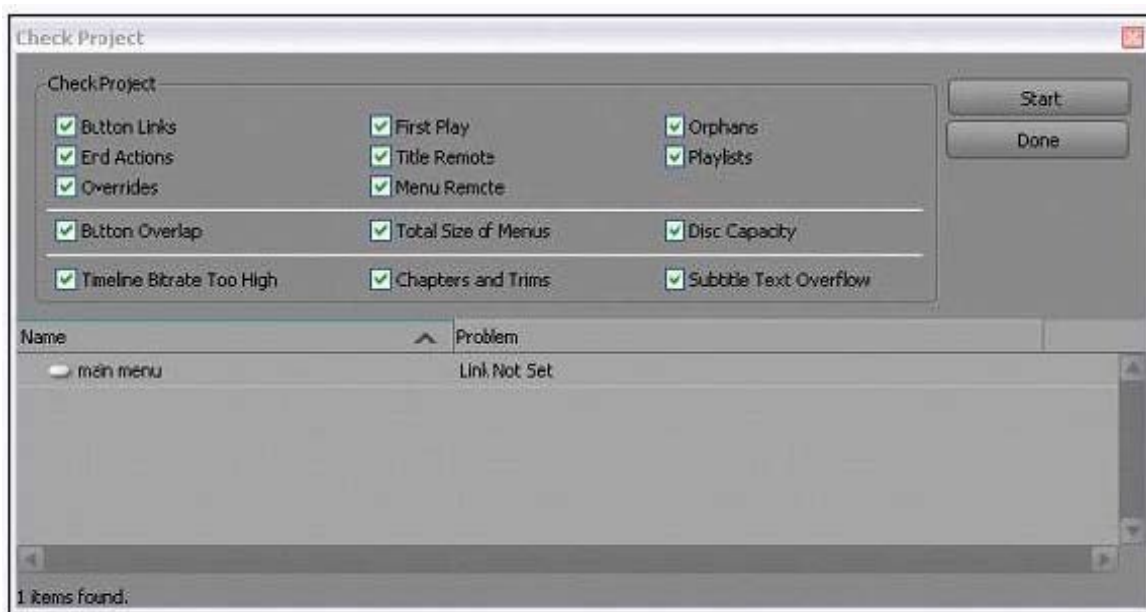
14. You have five timelines, each with an end action that links to the next timeline in the sequence of five. Your main menu has a Play All button that when clicked, plays all five timelines in a row. You want to

create a submenu that allows viewers to play single timelines, and have the DVD return to the submenu menu rather than moving on to the next timeline. How do you accomplish this?

- A. change the override for each timeline
- B. change the end action for each timeline
- C. set an override for each submenu button
- D. set an end action for each submenu button

Answer: C

15. Click the Exhibit button. How can you fix the problem identified by the Check Project dialog box shown in the exhibit?



- A. define a link from the Main Menu button
- B. define a default button on the main menu
- C. define an override for the Main Menu button
- D. define the main menu as the first play object

Answer:A

16. Which three can be contained in a chapter playlist? (Choose three.)

- A. an end action
- B. multiple chapters

C. multiple timelines

D. multiple discontinuous chapters

Answer: ABD

17. In the Menus panel, you can _____.

A. double-click on a menu name to Set As First Play

B. use the right-click, context menu to change its end action

C. use the Import As option to import a video as a Motion menu

D. use the button listing and the pick-whip from the Properties panel to create links

Answer: D

18. You have created a Slideshow menu. You want to add an audio file to loop twice in the background while the menu is active. What should you do?

A. select the audio file in the project panel and drop the file on the menu in the Menu Viewer; in the Basic tab of the menu Properties, type 2 next to the Loop # option

B. select the audio file in the project panel and drop the file on the menu in the Menu Viewer; in the Motion tab of the menu Properties, type 2 next to the Loop # option

C. select the menu in the project panel; on the Basic tab of the Properties Panel, type the name of the audio file beside the word Audio; type 2 next to the Loop # option

D. select the menu in the project panel; on the Basic tab of the Properties Panel, drag the pick-whip beside the word Audio to the audio file in the project panel; type 2 next to the Loop # option

Answer: B

19. The Layer-name prefix(+^)in the Layers panel indicates the layer set that links to the _____ when chapter indexes are created.

A. main menu

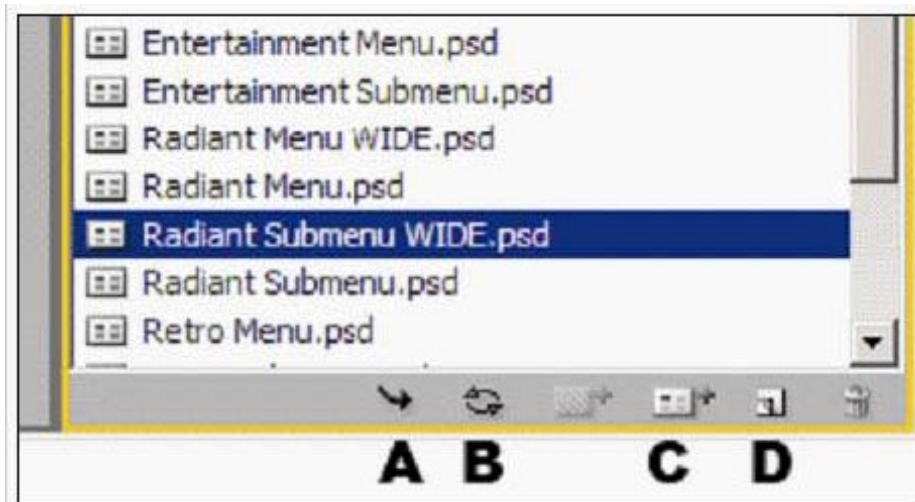
B. next submenu

C. previous submenu

D. chapter in a timeline or slideshow

Answer:A

20. Click the Exhibit button. You create a menu in standard NTSC 4:3 format. You want to recreate the menu in 16:9 widescreen format using a template from the Library panel. You have the current menu displayed in the Menu Viewer and the new 16:9 menu template selected in the Library panel. In the exhibit, which button allows you to replace the existing menu with the new menu format and keep button text and links intact?



A. A

B. B

C. C

D. D

Answer: B

This document was created with Win2PDF available at <http://www.win2pdf.com>.
The unregistered version of Win2PDF is for evaluation or non-commercial use only.
This page will not be added after purchasing Win2PDF.