

IT-DUMPS Q&A

Accurate study guides, High passing rate!
IT-dumps provides update free of charge in one year!

Exam : 642-176

**Title : Small Medium Business for
Engineers**

Version : DEMO

1.Refer to the exhibit. What are the two options available when using the Security Audit configuration task in Cisco SDM? (Choose two.)



- A.Perform a virus scan.
- B.Perform a secure audit on the router.
- C.Perform a one-step lockdown on the router.
- D.Perform a denial-of-service attack on the router to verify that it is protected.
- E.Perform a real-time inspection of incoming traffic destined for the router.

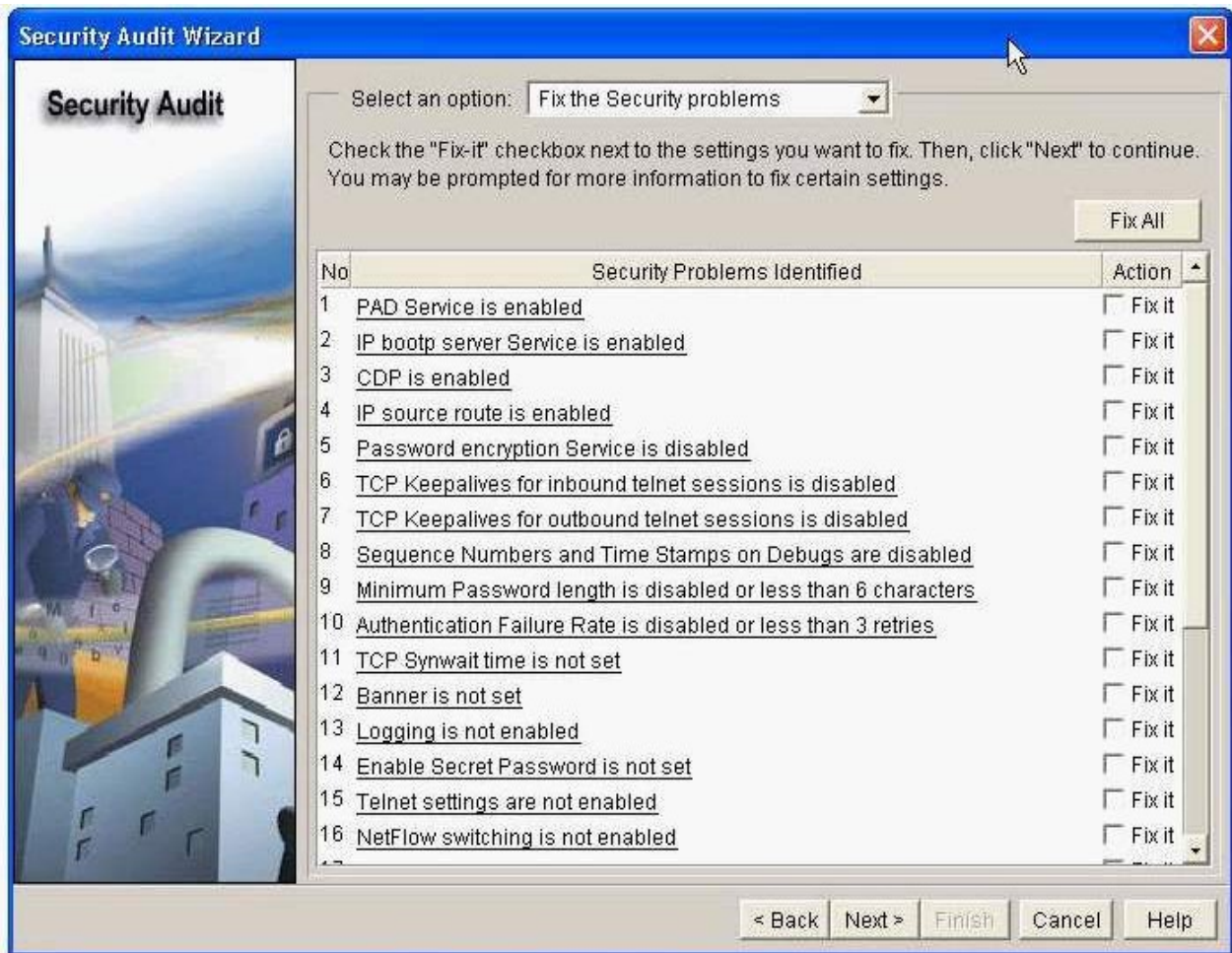
Correct: B C

2.The recommended WAN access method for a simplified and cost-effective Cisco Single-Site Secure Network Foundation deployment provides which type of service?

- A.best-effort
- B.low latency
- C.guaranteed quality
- D.guaranteed bandwidth

Correct:A

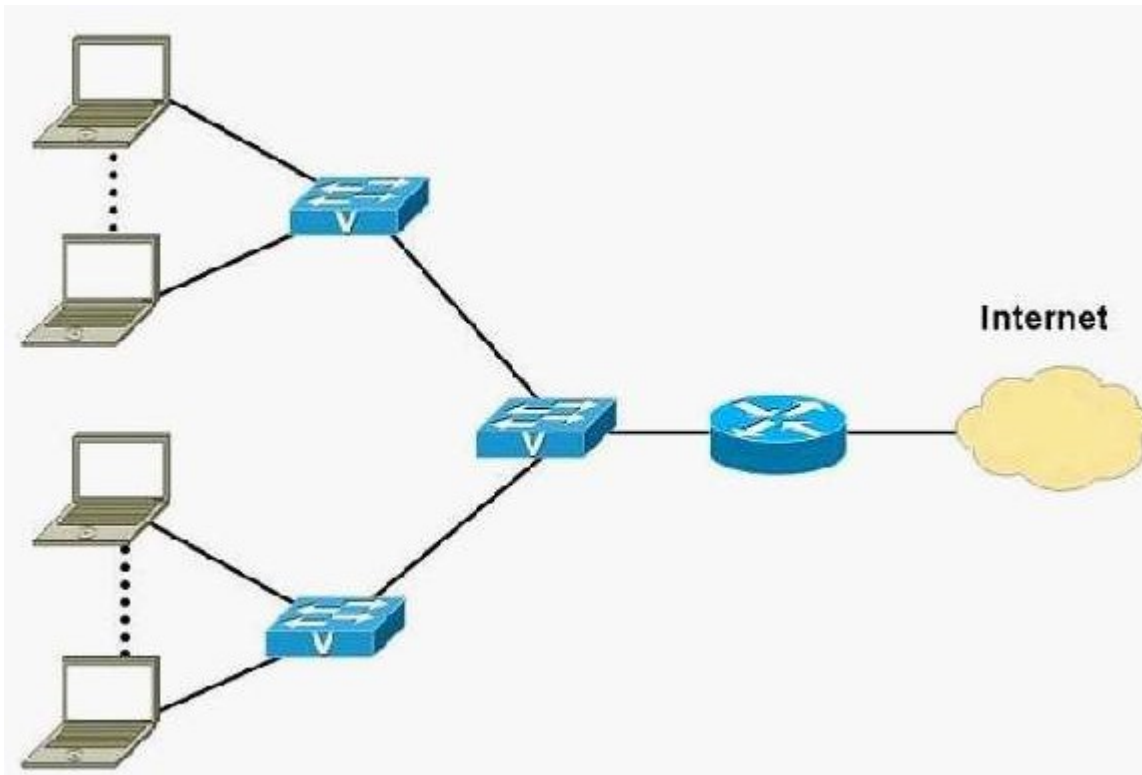
3.Refer to the exhibit. From this Cisco SDM Security Audit Wizard screen, what should you do to secure the router?



- A.Click Next.
- B.Click Fix All, then Next.
- C.Click Fix All, then clear CDP check box, then Next.
- D.Click Fix All, then clear CDP check box, then Next, then immediately reboot the router.
- E.Click Fix All, then clear CDP check box, then Next, then manually disable CDP on the WAN interface.
- F.Click Fix All, then clear CDP check box, then Next, then manually disable CDP on the WAN interface, then immediately reboot the router.

Correct:E

4.Refer to the exhibit. In a Cisco Single-Site Secure Network Foundation implementation, which factor affects your choice of switch configuration?



- A.type of QoS scheme that is being used
- B.maximum number of supported IP phones
- C.maximum amount of packet latency acceptable
- D.type of security scheme that is being implemented

Correct:B

5.What is the reason for running spanning tree in a Cisco Single-Site Secure Network Foundation solution?

- A.to allow management of all network devices
- B.to aggregate logical network groups together at one central point
- C.to protect the network in case someone inadvertently creates a physical loop in it
- D.to ensure that if a device fails another device will automatically take over for it
- E.to connect like devices, such as phones or computers, in logical network groups

Correct:C