

IT-DUMPS Q&A

Accurate study guides, High passing rate!
IT-dumps provides update free of charge in one year!

Exam : 50-865

**Title : cni-groupwise 6.0
administration**

Version : Demo

1.What is the correct command to load the GroupWise 6 GWPOA.NLM with the ACCT.POA startup file on your NetWare server?

- A.NGWPOA -ACCT.POA
- B.GWPOA @ACCT.POA
- C.GWPOA.NLM -ACCT.POA
- D.load GWPOA /ACCT.POA
- E.load GPOA /s ACCT.POA

Answer:B

2.A resource is a physical asset that can be checked out or scheduled. You can check a resources availability with a busy search. When creating a GroupWise resource, you must assign an owner who makes scheduling and allocation decisions. Which is a prerequisite when assigning an owner?

- A.A resource owner cannot own any other objects.
- B.A resource must be in the same container as the resource owner.
- C.A resource must be in the same post office as the resource owner.
- D.A resource must be in the same domain as the resource owner, but it can be in a different post office.
- E.It makes no difference where the owner and resource objects are located as long as they are defined in the system and are visible in the address book.

Answer:C

3.What WebAccess installation provides the most security?

- A.A one-server solution
- B.A two-server solution
- C.A one-to-many server solution
- D.A single WebAccess installation
- E.Multiple WebAccess installations

Answer:B

4.When you delete an eDirectory user who has a GroupWise account, you are prompted to identify what attributes to delete. Which options can you use if the NetWare user and the GroupWise object are no longer used? (Choose 3.)

- A.Delete External Entity
- B.Delete GroupWise Alias
- C.Delete eDirectory Account
- D.Delete GroupWise Account
- E.Expire GroupWise Account
- F.Delete GroupWise Nickname

Answer:C D E

5.When configuring the WebAccess Agent Properties page in ConsoleOne, what is the default name for the SNMP Community "Get" String field? Answer:

- A.PUBLIC

Answer:A

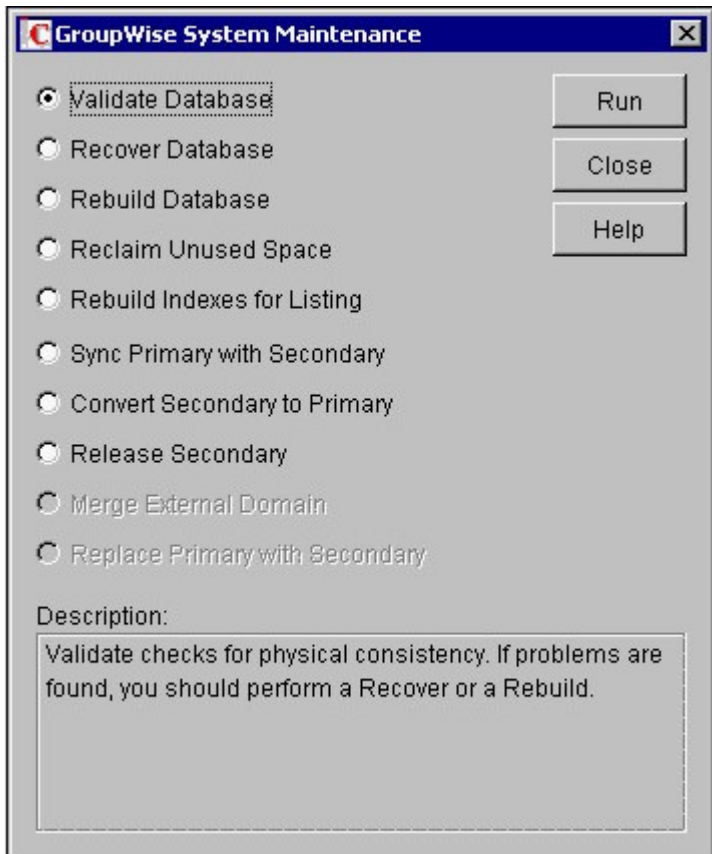
6.Your system consists of several domain sites linked to a hub domain. There is a gateway link to a remote site consisting of several directly linked domains. What type of link configuration is this?

- A.Star
- B.Ring
- C.Mesh

- D.Direct
- E.Hybrid
- F.Indirect

Answer:E

7.Perform the following point and click task. Begin by clicking the Point-and-Click button. When you finish, continue to the next question by clicking the Next button. On the displayed graphic, click on the option you would select in GroupWise System Maintenance when the Primary Domain database contains out-of-date information about a secondary domain?



Answer:

8.A GroupWise system can span multiple trees. What is one limitation when you are spanning trees?

- A.The post office object and all objects associated with the post office must be in the same container.
- B.The post office object and all objects associated with the post office must be contained in the same replica.
- C.The domain object and all objects associated with the domain (gateway, post office, users) must be in the same tree.
- D.The domain object and all objects associated with the domain (gateway, post office, users) must be in the same partition.
- E.The domain object and all objects associated with the domain (gateway, post office, users) must be in the same container.

Answer:C

9.GroupWise Monitor consists of 2 modules. What are they? (Choose 2.)

- A.Workstation
- B.GroupWise System

- C.GroupWise Web Server
- D.GroupWise Web Browser
- E.GroupWise Monitor Agent
- F.GroupWise Monitor Application

Answer:E F

10.Why does an external entity appear in the GroupWise address book?

- A.For addressing purposes only
- B.For administrative purposes only
- C.So the external entity can connect to eDirectory
- D.It does not display in the address book. It only appears in eDirectory
- E.To allow the administrator to run Mailbox/Library Maintenance in the external entity to make sure there is no database corruption

Answer:A

11.By default, all users in the GroupWise system can use GWIA services. You can prevent access to GWIA services for individual users, distribution lists, post offices, or domains. Users can be members of more than one class of service, resulting in conflicting privileges. If a user has a class membership in a distribution list that prevents SMTP outgoing messages and has class membership in another distribution list that allows SMTP outgoing messages, which would apply?

- A.The class membership in the distribution list that was created last.
- B.The class membership in the distribution list that was created first.
- C.The class membership in the distribution list that offers the least access takes precedence.
- D.The class membership in the distribution list that offers the greatest access takes precedence.

Answer:D

12.The agents are responsible for updating all directory store databases. What is this process called?

- A.Agent replication
- B.Database distribution
- C.Index synchronization
- D.Directory store update
- E.Directory synchronization

Answer:E

13.What WebAccess configuration file contains the encryption key, IP address, and port of the default agent? (Enter the file name only.) Answer:

- A.COMMGR.CFG

Answer:A

14.By default, GroupWise 6 GWIA is configured to prevent message relaying. How does this affect remote users?

- A.It has no affect on them.
- B.Remote users can't send or receive email.
- C.GroupWise POP3/IMAP4 users can't receive email from GIWA but can use GWIA to send mail.
- D.GroupWise POP3/IMAP4 users can receive email from GWIA but cannot use GWIA to send mail unless access control exceptions are configured.

Answer:D

15.Perform the following drag-and-drop task. Begin by clicking the Drag-and-Drop button. When you finish, continue to the next question by clicking the Next button. Match each timeout setting with its

description.

Timeout switches		Descriptions
<code>/tr</code>	place here	Specifies how long the SMTP daemon waits for a TCP read
<code>/tg</code>	place here	Specifies how long the SMTP daemon waits for an SMTP command
<code>/tc</code>	place here	Specifies how long the SMTP daemon waits for the receiving host to establish a connection
<code>/te</code>	place here	Specifies how long the SMTP daemon waits for the initial greeting from the receiving host
<code>/tt</code>	place here	Specifies how long the SMTP daemon waits for the receiving host to terminate the connection
<code>/td</code>	place here	Specifies how long the SMTP daemon waits for data from the receiving host

Answer:

Green choice1---->Yellow Choice1

Green choice3---->Yellow Choice2

Green choice4---->Yellow Choice3

Green choice2---->Yellow Choice4

Green choice5---->Yellow Choice5

Green choice6---->Yellow Choice6

16.Where are the log files for GroupWise monitor stored by default?

- A.WEB SERVER\NOVELL\LOGS
- B.WEB SERVER\NOVELL\GRPWISE
- C.WEB SERVER\NOVELL\MONITOR
- D.WEB SERVER\NOVELL\GWMONITOR
- E.WEB SERVER\NOVELL\GRPWISE\LOGS

Answer:D

17.To maintain Directory store databases, you need to use the System Maintenance options from the Tools menu. What are the options? (Choose 5.)

- A.DiskCheck
- B.Rebuild Database
- C.Validate Database
- D.Recover Database
- E.Reclaim Unused Space
- F.Rebuild Indexes for Listing
- G.NDS User Synchronization
- H.Mailbox/Library Maintenance

Answer:B C D E F

18.What tools give you information to help you understand your system performance, to troubleshoot problems, and to configure settings for your domains and post offices? (Choose 3.)

- A.Web Console
- B.GWIA Monitor
- C.Agent display
- D.Agent log files
- E.GWCHECK.EXE
- F.Netware Administrator

Answer:A C D

19.The link configuration screen in ConsoleOne allows you to modify or create links. What does the following icon represent?



- A.Link down
- B.Indirect link
- C.Gateway link
- D.Undefined link
- E.No rights to modify link
- F.Link modified in another view

Answer:F

20.By default, what protocol does GroupWise monitor use to communicate with your web browser?

Answer:

- A.HTTP

Answer:A