

IT-DUMPS Q&A

Accurate study guides, High passing rate!
IT-dumps provides update free of charge in one year!

Exam **50-683**

Title Desktop management with
zenworks for desktops 4

Version . Demo

1.What is the NetWare console command to verify that automatic workstation import (AWI) is working correctly?

- A. JAVA -SHOW
- B. ZENWSIMPORT
- C. JAVA -ZENWSIMPORT
- D. SHOW -ZENWSIMPORT

Answer:A

2.Which statements are true regarding ZENworks for Desktops 4 (ZfD 4) policies? (Choose two)

- A. Policies are stored on the workstation.
- B. Policies are grouped according to functional area.
- C. Policies allow you to assign file system rights to users.
- D. ZfD 4 allows the same type of policy to perform various actions according to a specified schedule.

Answer:B, D

3 .By default, which policy package has highest precedence?

- A. A policy package associated with a group object.
- B. A policy package associated with the root object.
- C. A policy package associated with an organization (O) object.
- D. A policy package associated with an organization unit (OU) object.

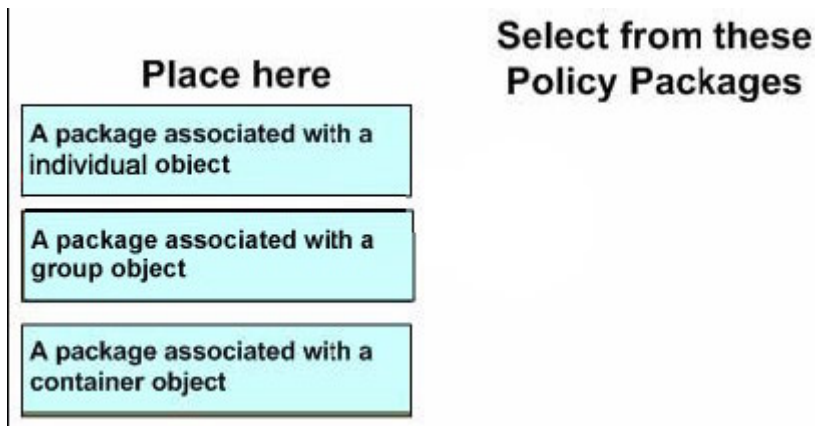
Answer:A

4.DRAG DROP

Rank the default precedence of each policy package in order, from highest to lowest.

Place here	Select from these Policy Packages
Place highest precedence here	A package associated with a group object
Place middle precedence here	A package associated with a container object
Place lowest precedence here	A package associated with a individual object

Answer:



5.Which ZENworks for Desktops 4 (ZfD4) policies are cumulative policies? (Choose two)

- A. Windows Group policies
- B. Dynamic Local User polices
- C. Computer Extensible policies
- D. Windows Desktop Preferences policies

Answer:A, C

6.What is the benefit of implementing a search policy?

- A. It allows you to search eDirectory for a specified user.
- B. It limits how fat up the tree ZENworks looks for effective polices.
- C. It allows outdated workstations to be easily located and removed.
- D. It allows you to monitor events from outside the organization's network.

Answer:B

7.You created a server policy package and associated it with a server object.

Where are the polices applied?

- A. To all ZENworks for Desktops back-end servers-
- B. To all objects in the tree that are valid types for the package.
- C. To all objects on the server that are valid types for the package.
- D. To all objects in the container that are valid types for the package.

Answer:C

8.Which server package policy should you use to automatically place and name workstation objects in the eDirectory tree?

- A. Rollup policy
- B. Wake-on-LAN policy
- C. Imaging server policy
- D. Workstation import policy

Answer:D

9.Which remote management utility can you use to run applications on the managed

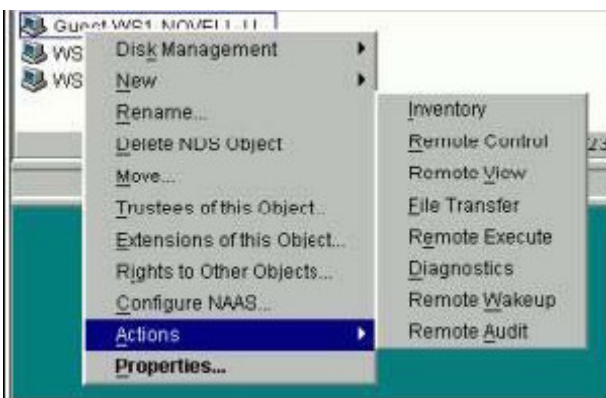
workstation from the administrator workstation?

- A. Diagnostics
- B. File Transfer
- C. Remote View
- D. Remote Execute
- E. Remote Wake Up

Answer:D

10.HOTSPOT

Click the option in ConsoleOne you use to get real-time information about device drivers on the controlled workstation.



Answer:

11.What objects can you use to set security parameters for remote management? (Choose 2.)

- A. Alias
- B. User
- C. Group
- D. Workstation
- E. Server package

Answer:B, D

12.Which eDirectory design guidelines for NetWare should you follow when implementing ZENworks for

Desktops? (Choose two)

- A. Tier design guidelines
- B. Tree design guidelines
- C. Policy design guidelines
- D. Server design guidelines
- E. Replica design guidelines

Answer:B, E

13.Which utility do you use to access the Remote Operator Wizard?

- A. StartX
- B. iMonitor
- C. iManager
- D. ConsoleOne

Answer:D

14..In relation to ZENworks for desktop 4, which tool is used to assign the necessary rights for a user to remotely control a workstation?

- A. Help desk wizard
- B. Remote control wizard
- C. Remote operator wizard
- D. Remote management wizard

Answer:C

15.Which tool can you use to remotely manage a workstation?

- A. NWAdmin
- B. RCONJ.EXE
- C. DESKTOP4.EXE
- D. Application explorer/launcher
- E. The remote management agent

Answer:C

16.Which policy can have multiple instances for the same user policy package?

- A. Novell iPrint policy
- B. Remote control policy
- C. User extensible policy
- D. Scheduled action policy
- E. Dynamic local user policy

Answer:D

17.What can the user package Novell iPrint policy do? (Choose all that apply.)

- A. Set a printer as a default printer.
- B. Install NIPP.EXE on the workstation.
- C. Configure a printer for a workstation.
- D. Install the iPrint client on a workstation.

Answer:A, D

18.Which configurations can be easily set using policies in the user package? (Choose two)

- A. Deploying applications across various LAN locations.
- B. Tracking various types of hardware used in your organization.
- C. Providing a full-access workstation environment for administrators.
- D. Maintaining a workstation environment for users with special needs.

Answer:C, D

19.Which object can you associate with a workstation package?

- A. User
- B. Printer
- C. Security
- D. Container
- E. Computer

Answer:D

20.When configuring a Workstation package, policies are available under 6 categories.

General, Win95-98,

WinNT-2000-XP, WinNT, Win2000, and WinXP.

What policies can be configured under the General polices category? (Choose two)

- A. Help Desk
- B. Client Config
- C. Remote Control
- D. Workstation Imaging
- E. Computer Extensible

Answer:C, D

21.In relation to a Windows group policy, which feature allows you to change the policy preference to ensure that workstation policies take precedence over user polices?

- A. ZEN policy loopback
- B. User policy loopback
- C. Group policy loopback
- D. Workstation policy loopback

Answer:C

22.To configure user-defined policies using the ADM files for workstation objects, which policy do you configure?

- A. Remote control
- B. Scheduled action
- C. Computer extensible
- D. Workstation imaging
- E. ZENworks for Desktops management agent

Answer:C

23.The ZENworks for Desktop 4 web services architecture eliminates the need for which component?

- A. Firewall
- B. Novell Client
- C. ZENworks middle tier

D. ZENworks back-end server

Answer:B

24.Which object can a service location package be associated with? (Choose one)

- A. User object
- B. Root object
- C. Group object
- D. Server object
- E. Country object
- F. Workstation object
- G. Organizational unit object

Answer:G

25.You have a critical application that is being deployed to workstations and you want to receive notification if any workstation fails to install the application. You also want a list of workstations that the application is delivered to.

Which service location package policies should you configure to receive this information? (Choose two)

- A. XSLT policy
- B. SMTP host policy
- C. SNMP trap targets policy
- D. ZENworks database policy

Answer:B, C

26.For an application to be distributed to a workstation, what defines the information required to distribute it?

- A. The application object
- B. The application's .INI file
- C. The application container
- D. Novell application launcher (NAL)

Answer:A

27.Which of the following describes the ZENworks for Desktop 4 application browser?

- A. A distributed application icon that is displayed in the system tray.
- B. A web browser view that displays icons for distributed applications.
- C. A standalone window that displays icons for distributed applications.
- D. A distributed application icon that is displayed on the Windows desktop.

Answer:C

Not B.Its not a web application

28.Which is true concerning ZENworks for Desktop 4 application folders? (Choose

three)

- A. They can be created as a template object.
- B. They can be created using an application object.
- C. They can be created as an application folder object.
- D. They are used to organize and distribute workstation images.
- E. They are used to organize the applications you distribute to users through

Novell application launcher (NAL).

Answer:B, C, E

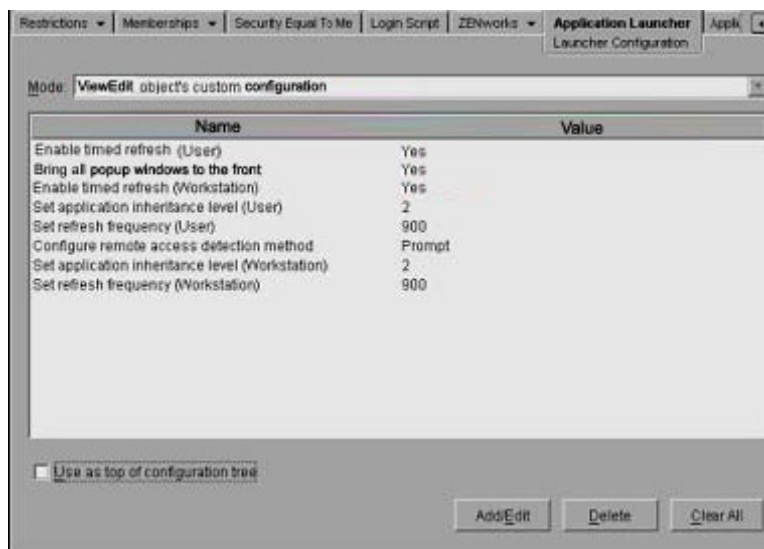
29.You are using ZENworks for Desktop 4.

Which HTML file must be configured for remote users to access applications through their browsers?

- A. APPS
- B. DOCS
- C. INDEX
- D. MYAPPS
- E. MYDOCS

Answer:D

30.Exhibit.



What will happen if you select the Use as top of configuration tree box?

- A. NAL will walk the tree all the way to the root object.
- B. NAL will not walk the tree under the child container.
- C. NAL will search eDirectory until it finds all container policies.
- D. NAL will stop searching eDirectory for launcher configuration when it reaches this container.
- E. NAL will stop searching eDirectory for applications or policies when it reaches this container.

Answer:D