

# IT-DUMPS Q&A

Accurate study guides, High passing rate!  
IT-dumps provides update free of charge in one year!

**Exam** : **4A0-105**

**Title** : Alcatel-Lucent Virtual  
Private LAN Services

**Version** : Demo

1.Which of the following technologies allows for two explicit VLAN tags to be received from a customer device?

- A. RSVP-TE
- B. SP-VLAN
- C. QinQ
- D. Dot1Q

**Answer: C**

2.What is the SA in the Ethernet frame used for by a layer 2 switch?

- A. MAC learning
- B. SA filtering
- C. Routing table population
- D. Frame forwarding

**Answer: A**

Explanation:

3.What are the limitations of a traditional layer 2 switch? (Choose 3)

- A. Isolates collision domains.
- B. Requires layer 2 loop prevention.
- C. Slow response to topology changes.
- D. Limited to 4094 vlans per switch.
- E. Increased flooding.

**Answer: B,C,D**

4.Which of the following statements about the VC-ID is false?

- A. The vc-id is signaled in the control plane.
- B. The vc-id is part of the data plane encapsulation.
- C. There is a vc-id to vc-label mapping.
- D. The vc-id has point to point significance.

**Answer: B**

5.Assuming TLDP and RSVP are both being used in an MPLS network core which of the following statements is true?

- A. TLDP is used to create the inner label, RSVP is used to create the outer label.
- B. TLDP is used to create the outer label, RSVP is used to create the inner label.
- C. TLDP and RSVP cannot be used in the same network since they both provide the same label.
- D. When RSVP is used, TLDP must be disabled and static vc labels should be used.
- E. TLDP and RSVP can be used to create either labels based on how they are configured.

**Answer: A**

6.Fill in the blank for this next sentence.

Flooded traffic received on any \_\_\_\_\_ in the service is replicated to other spoke SDPs and SAPs and not transmitted on any mesh SDPs.

- A. Spoke SDP

- B. Mesh SDP
- C. Either (a) or (b) will make this sentence true.
- D. Neither (a) nor (b) will make this sentence true.

**Answer: B**

7.Port 1/1/1 has been configured as an access port with QinQ encapsulation.

Which of the following three statements are true for ingress traffic assuming default configuration?  
(Choose 3)

- A. sap 1/1/1:\*:0 is a valid sap id.
- B. sap 1/1/1:100\* will accept frames with a single tag of 100.
- C. sap 1/1/1:200\* will strip the top tag of 200 and the bottom tag will be transparently passed.
- D. sap 1/1/1:0\* will accept all untagged frames.
- E. sap 1/1/1:0\* will accept any tagged frames.

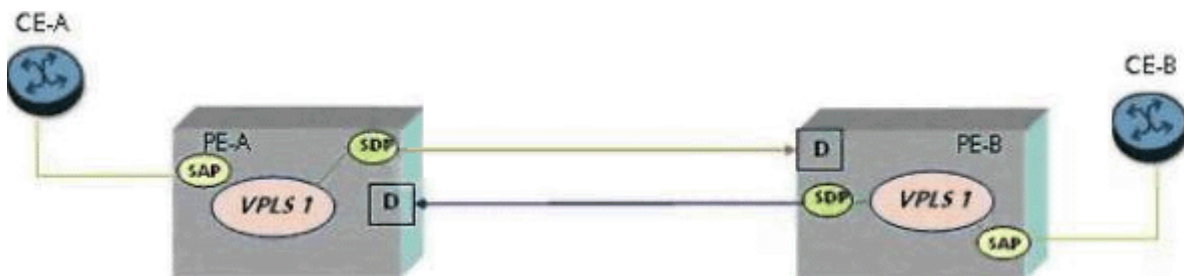
**Answer: B,C,D**

8.Which of the following statements relating to VPLS is false?

- A. A VPLS is a multipoint Layer 2 service.
- B. A VPLS allows multiple customer sites to be connected in a single bridged domain.
- C. A VPLS on a single node requires a SDP.
- D. With an IP/MPLS infrastructure, service providers can provide multiple VPLS services over a common IP/MPLS infrastructure.
- E. The VPLS switches traffic based on MAC address associated to the appropriate SAP.

**Answer: C**

9.Click on the exhibit below.



Assume the port on CE-A is sending two tags, a top tag of 100 and a bottom tag of 500. PE-A is configured with a SAP id of 1/1/1:100.\*.

How should PE-B be configured if CE-B is expecting a top tag of 200 and a bottom tag of 500?

- A. PE-B will require a SAP id of "sap 1/1/1:500\*".
- B. PE-B will require a SAP id of "sap 1/1/1:100\*".
- C. PE-B will require a SAP id of "sap 1/1/1:500.200".
- D. PE-B will require a SAP id of "sap 1/1/1:200\*".

**Answer: D**

10.Which of the following statements is false?

- A. VPLS is a bridged LAN service.
- B. VPLS provides L2 VPN services to CEs.

- C. VPLS is a point-to-point service where CEs are presented with point-to-point virtual circuits.
- D. CEs that are members of the same VPLS service instance communicate with each other as if they are connected via a bridged LAN.

**Answer: C**

11. Click on the exhibit below.

```

vpls 1 customer 1
 sap 1/1/1:0

vpls 2 customer 2
 sap 1/1/1:100

vpls 3 customer 3
 sap 1/1/1:300
    
```

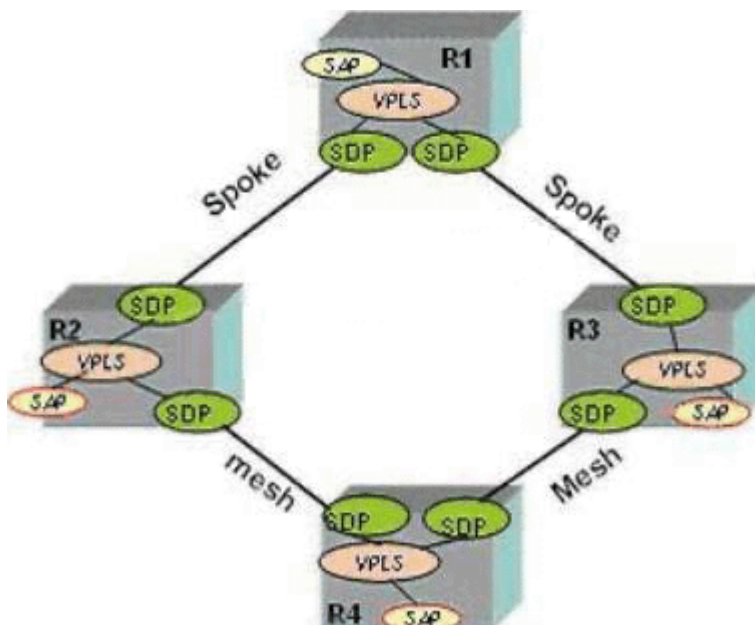
The following VPLS services and SAPs have been configured.

Which of the following statements is true?

- A. All untagged frames will be dropped.
- B. The source MAC address of a frame with a top tag of 200 and bottom tag of 300 will be populated in VPLS 3.
- C. All frames with more than one tag will be dropped.
- D. The source MAC address of a frame with a single tag of 500 will be populated in VPLS 1.
- E. The source MAC address of a frame with a top tag of 100 will be populated in VPLS 2.

**Answer: E**

12. Click on the exhibit below.



If the SDP between R2 and R1 goes down, what devices will be reachable from R2 through the VPLS?

- A. Only R4 will be reachable through the VPLS.
- B. All devices will be reachable through the VPLS.
- C. R4 and R3 will remain reachable.

D. No devices will be reachable.

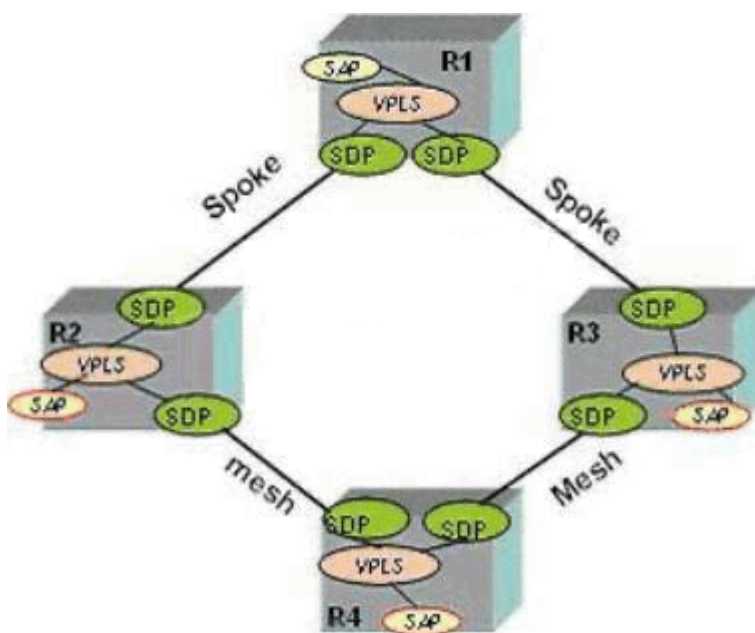
**Answer: A**

13. What is the default service-mtu for a VPLS service?

- A. 1500
- B. 1514
- C. 1518
- D. It depends on the access port MTU.
- E. It depends on the network port MTU.

**Answer: B**

14. Click on the exhibit below.



The VPLS service MTU on R2 is 1514 bytes.

What must the service MTU be on all other routers participating in the VPLS?

- A. The service MTU must be equal to or smaller than 1514 bytes.
- B. The service MTU must be 1514 bytes.
- C. The service MTU must be equal to or greater than 1514 bytes.
- D. The service MTU can be any value.

**Answer: B**

15. What is the default fdb size for a VPLS service?

- A. 100
- B. 1
- C. 25
- D. 250

**Answer: D**

16. If the command "disable-learning" has been added at the VPLS level, then MAC entries which have

already been learned will not be aged.

- A. TRUE
- B. FALSE

**Answer: B**

17.Which OAM tool can be used to dynamically learn the MAC address of a CE device connected to a SAP within a VPLS service?

- A. oam mac-populate
- B. oam mac-ping
- C. oam mac-trace
- D. oam svc-ping
- E. oam cpe-ping

**Answer: E**

18.During the process of troubleshooting a VPLS problem the "oam mac-purge" command with "register" option was used to purge a MAC address from the FDB.

Which of the following statements is true?

- A. Relearning of the MAC address that was purged can only be done once customer traffic resumes.
- B. Relearning of the MAC address that was purged can only be done with the "oam mac-populate" command.
- C. Customer traffic destined to the MAC address that was purged will be dropped until the MAC address is relearned with the "oam mac-populate" command.
- D. Relearning of the MAC address that was purged can only be done with the "oam mac-register" command.

**Answer: B**

19.Click on the exhibit below.

```
ip-filter 40 create
  default-action forward
  entry 20 create
    match
      dst-ip 192.168.1.2/32
    exit
  action forward sdp 100:1
exit
exit
```

The following IP filter has been configured and applied to a SAP in a non-VPLS service.

Which of the following statements is true?

- A. An error will be generated and the configuration will not be allowed.
- B. The filter entry will be ignored and traffic matching the criteria will be forwarded
- C. All traffic matching entry 20 will be dropped.
- D. Traffic matching entry 20 will be forwarded to sdp 100:1.

**Answer: C**

20. Which of the following statements is true?

- A. Filter Policies can only be applied on egress.
- B. An IP filter can be applied on ingress at the same time a MAC filter is applied on the egress of the SAP.
- C. Filter Policies can be based on IP, MAC, and VPI/VCI addresses.
- D. Any number of ingress and egress filter policies can be associated with a SAP.
- E. An IP filter and a MAC filter can be applied on the ingress SAP at the same time.
- F. None of the above.

**Answer: B**