

IT-DUMPS Q&A

Accurate study guides, High passing rate!
IT-dumps provides update free of charge in one year!

Exam : 070-689

**Title : Upgrading Your Skills to
MCSA Windows 8**

Version : DEMO

1.A company has an Active Directory Domain Services (AD DS) domain. All client computers run Windows 8 and are members of the domain. Client computers maintain a list of sites in the Internet Explorer Restricted Sites security zone. Users of one client computer are able to download and install an application from a site within the Restricted Sites zone. You need to ensure that users of the computer can install applications only from sites that are not in the Restricted Sites zone.

What should you do?

- A. Run the Set-ExecutionPolicy Windows PowerShell cmdlet.
- B. Configure the Software Restriction Policy settings in the local Group Policy of the computer.
- C. Add the blocked application as a software restriction policy to the GPO that configures AppLocker.
- D. Run the Get-AppLockerPolicy Windows PowerShell cmdlet.
- E. Add the blocked application as an additional AppLocker rule to the GPO that configures AppLocker.

Answer: E

2.A company has 100 client computers that run Windows Vista. The company uses several custom applications. The company plans to replace the Windows Vista computers with new computers that run Windows 8. You need to establish which of the currently installed applications will work on Windows 8.

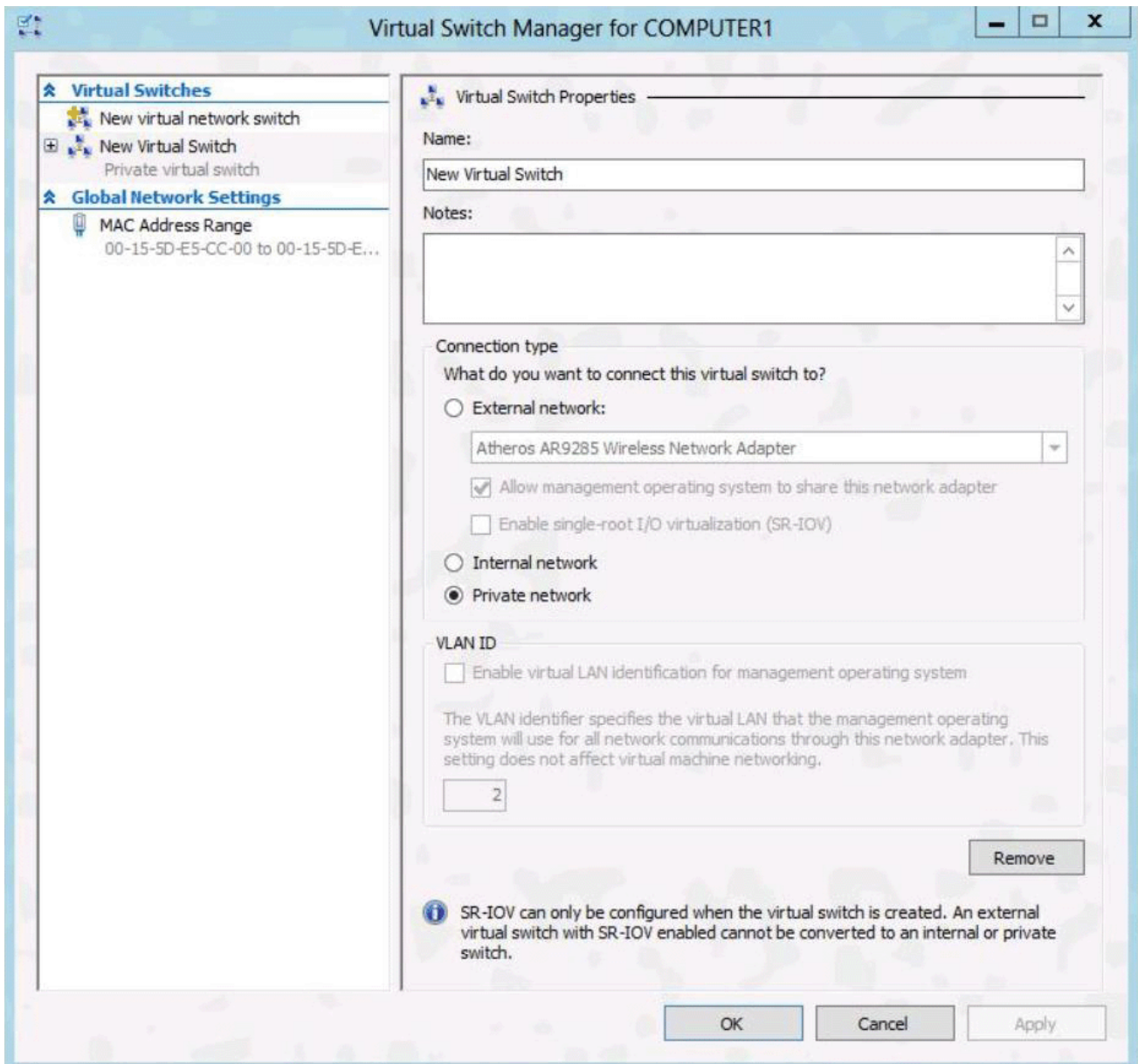
What should you do?

- A. Install and run the Microsoft Deployment Toolkit.
- B. Install and run the Windows App Certification Kit.
- C. Install and run the Windows Application Compatibility Toolkit.
- D. Install and run the Microsoft Assessment and Planning Toolkit.

Answer: A

3.A company has an Active Directory Domain Services (AD DS) domain with one physical domain controller. All client computers run Windows 8. A client computer hosts a Windows 8 virtual machine (VM) test environment.

The VMs are connected to a private virtual switch that is configured as shown in the Virtual Switch Manager exhibit. (Click the Exhibit button.)



The VMs are unable to connect to the domain controller.

You have the following requirements:

- Configure the test environment to allow VMs to communicate with the domain controller.
- Ensure that the VMs can communicate with other VMs in the test environment when the domain controller is unavailable.

You need to meet the requirements. What should you do first?

- A. Change the connection type of the private virtual switch to Internal only.
- B. Create a new virtual switch with a Private Network connection type.
- C. Create a new virtual switch with an External Network connection type.
- D. Create a new virtual switch with an Internal Network connection type.

Answer: C

4.A company has client computers that run Windows 8. You attempt to roll back a driver for a specific device on a client computer. The Roll Back Driver button is unavailable in Device Manager. You need to

roll back the driver to the previous version.

What should you do first?

- A. Disable driver signature enforcement.
- B. Run Device Manager as an administrator.
- C. In the local Group Policy, modify the device installation restrictions.
- D. In the system properties for hardware, modify the device installation settings.

Answer: C

5.You manage computers that run Windows 8. You plan to install a desktop app named App1 on one of the client computers. You need to install the app without any user interaction and without displaying a progress bar.

Which command should you run?

- A. `msiexec /i app1.msi /qb`
- B. `msiexec /i app1.msi /qn`
- C. `msiexec /x app1.msi /qb`
- D. `msiexec /x app1.msi /qn`

Answer: B

6.You update the video card driver on a portable computer that runs Windows 8. When a user connects the portable computer to an external monitor, the external monitor duplicates the display on the portable computer screen. You need to ensure that the user can display additional desktop space on the external monitor.

What should you do?

- A. Run the `DisplaySwitch /extend` command.
- B. Start the computer from the Windows 8 installation media and perform a system image recovery.
- C. Run the `sfc /scannow` command.
- D. Roll back the video card driver to the previous version.

Answer: D

7.DRAG DROP

A computer currently runs a 64-bit version of Windows 7 Enterprise. You need to deploy a 64-bit version of Windows 8 Pro to the computer. The new deployment must not affect the Windows 7 installation on the computer.

Which three actions should you perform in sequence? (To answer, move the appropriate actions from the list of actions to the answer area and arrange them in the correct order.)

Select the installation option to delete each partition on the hard drive.

Start the computer from the Windows 8 installation media.

Using Windows Explorer, run the setup program from the Windows 8 installation media.

Select the **Custom** installation option.

Select the **Upgrade** installation option.

In Disk Management, shrink the current hard drive partition.

Answer:

Select the installation option to delete each partition on the hard drive.

Using Windows Explorer, run the setup program from the Windows 8 installation media.

Select the **Upgrade** installation option.

In Disk Management, shrink the current hard drive partition.

Start the computer from the Windows 8 installation media.

Select the **Custom** installation option.

Explanation:

<http://lifel hacker.com/5840387/how-to-dual+boot-windows-7-and-windows-8-side-by-side>

8.DRAG DROP

Ten client computers run Windows Vista and a custom application. The custom application is compatible with Windows 8. You purchase 10 new computers that have Windows 8 pre-installed. You plan to migrate user settings and data from the Windows Vista computers to the Windows 8 computers. You install the User State Migration Toolkit (USMT) on a USB flash drive. You need to ensure that the custom application settings are applied to the Windows 8 computers after the migration is complete.

Which three actions should you perform in sequence? (To answer, move the appropriate actions from the list of actions to the answer area and arrange them in the correct order.)

Uninstall the custom application from the Windows Vista computers.

Run the **scanstate** command on the Windows 8 computers.

Run the **loadstate** command on the Windows Vista computers.

Install the custom application on the Windows 8 computers.

Run the **scanstate** command on the Windows Vista computers.

Run the **loadstate** command on the Windows 8 computers.

Answer:

Uninstall the custom application from the Windows Vista computers.

Run the **scanstate** command on the Windows 8 computers.

Run the **loadstate** command on the Windows Vista computers.

Run the **scanstate** command on the Windows Vista computers.

Install the custom application on the Windows 8 computers.

Run the **loadstate** command on the Windows 8 computers.

9.A company has an Active Directory Domain Services (AD DS) domain. All client computers run Windows 7. You plan to upgrade the client computers to Windows 8 Pro. You need to choose the methods that do not require the manual entry of a product key during the upgrade.

Which two methods should you choose? (Each correct answer presents a complete solution. Choose two.)

- A. Use the Windows 8 online upgrade tool.
- B. Use Group Policy to assign the Windows 8 installation file to the client computers.
- C. Use the Microsoft Deployment Toolkit.
- D. Extract the contents of the Windows 8 .iso image file to a new shared folder and run the setup program from that folder.

Answer: A, C

10. An organization has client computers that run Windows 7. You upgrade the client computers to Windows 8 without migrating the local user profiles. You install the Windows Assessment and Deployment Kit (ADK) in the environment. You need to migrate the user profiles from the Windows 7 installation to the Windows 8 installation.

What should you do first on each client computer?

- A. Copy the Default Profile to a folder on drive C.
- B. Run Windows Easy Transfer and select the user profile to migrate.
- C. Run the scanstate command.
- D. Run the loadstate command.
- E. Run the ImageX command.

Answer: C

11. A company has client computers that run Windows 8. Each employee has one client computer at the office. Some employees also have personal computers at home. The company has applications that run only on Windows 8. You need to deploy Windows To Go so that employees can run the applications on their home computers.

Which two command-line tools should you use? (Each correct answer presents part of the solution.

Choose two.)

- A. ImageX
- B. bcdboot
- C. BdeHdCfg
- D. isoburn

Answer: A, B

12. A company has 100 client computers that run Windows XP 64-bit Edition. You are deploying new computers that run a 32-bit version of Windows 8. You need to transfer the contents of each user's Documents folder to the new computer by using the least amount of administrative effort.

What should you do?

- A. Manually copy the folder content to a USB flash drive. Then paste the files to the new computer.
- B. Use the User State Migration Tool.
- C. Use Windows Easy Transfer.
- D. Back up the folders by running the NTBackup command. Then restore the backup to the new computer.

Answer: B

13. A company has client computers that run Windows 8. You install a new device on a client computer. The device installation includes an application that runs when the computer starts. You experience problems with the application. You need to prevent the application from running when the computer starts, without affecting any other application.

What should you do?

- A. Configure the device by using Device Manager.
- B. Run the msconfig command.
- C. Run the bcdedit command.
- D. Configure the application by using Task Manager.

Answer: D

14.A company has client computers that run Windows 8. File History is on. An employee downloads data to a folder on drive D named Archives. You need to ensure that the user can restore files from the Archives folder by using File History.

What should you do?

- A. Start the Windows Backup service.
- B. Start the Block Level Backup Engine service.
- C. Turn on the Volume Shadow Copy Service.
- D. Create a library named History and add the Archives folder to the library.

Answer: D

15.You install Windows 8 on a desktop computer and install a third-party desktop app. The computer runs optimally until you install another third-party desktop app. You need to remove only the most recently installed third-party desktop app. You start the computer from a system repair disk.

Which troubleshooting option should you use?

- A. Remove everything and install Windows
- B. Refresh your PC without affecting your files
- C. System Restore
- D. System Image Recovery

Answer: C