

IT-DUMPS Q&A

Accurate study guides, High passing rate!
IT-dumps provides update free of charge in one year!

Exam : **050-676**

Title : upgrading to netware 6

Version : Demo

1.You have a server with the following specifications: NetWare 5.0 with Support Pack 6a Pentium II processor with 256 MB RAM 200 MB of free space on the DOS partition 3 GB of free space on volume SYS You want to replace this server with a NetWare 6 server as easily and inexpensively as possible. You have no other available machines, but purchasing new hardware is possible if it is necessary. Which option best meets these objectives?

- A.Perform an in-place upgrade to NetWare 6.
- B.Perform a NetWare accelerated upgrade to NetWare 6.
- C.Obtain new hardware to install a NetWare 6 server and copy the current server data to it.
- D.Use the migration wizard to migrate the current server's data to new NetWare 6 server hardware.

Answer:A

2.When creating an eDirectory index you must select a rule to use. Which rules are available? (Choose 3.)

- A.Entry
- B.Value
- C.Absence
- D.Presence
- E.Substring

Answer:B D E

3.How much memory must a NetWare 6 server have to install Novell Clustering Services (NCS) 1.6?

- A.1 GB
- B.128 MB
- C.256 MB
- D.512 MB

Answer:C

4.Which statements describe an eDirectory index? (Choose 2.)

- A.An index is stored in its associated server's file system.
- B.An index is stored as an attribute on a server object in a tree.
- C.An index is stored as an attribute on a container object in a tree.
- D.An index is created at the root of the tree and applies throughout the tree.
- E.An index is unique to one server but can be applied to more than one server.

Answer:B E

5.Which of the following are components of Novell Clustering Services (NCS) 1.6? (Choose 3.)

- A.An IDE controller
- B.A shared disk system
- C.SCSI cards and cables
- D.eDirectory 5.0 and later
- E.NetWare 6 servers configured to use IP

Answer:B C E

6.You have installed NFAP for Windows and are in the process of creating simple passwords for all objects in the Education container. What utility can you use to create all user simple passwords at one time?

- A.iMonitor
- B.ConsoleOne
- C.Novell iManager
- D.Remote Manager

E.Server Management Console

Answer:D

7.You need to modify your iPrint environment. Which web-based utility do you use to create and modify Printer, NDPS Broker, and NDPS Manager objects?

A.iMonitor

B.ConsoleOne

C.Remote Manager

D.Novell iManager

E.Server Management Console

Answer:D

8.You are using Deployment Manager to update eDirectory on your network servers. Which steps do you perform to see a list of all servers that need to be updated in your tree? (Choose 2.)

A.Select each server object in the tree.

B.Click the Check NDS Version button.

C.Select the top-most container in the tree.

D.Click the Include Subordinate Containers button.

E.Mark the Verify Version box next to each server object.

Answer:C D

9.Which are features and benefits of NSS? (Choose 2.)

A.Clustering

B.Borrowing space from other partitions

C.The creation of multiple storage pools within a partition

D.Saving your file data to disk immediately after you save the file instead of waiting for the next flush cycle

E.Turning off file compression after it's enabled on a volume without having to recreate the volume

Answer:A D

10.Which statements are true concerning filtered replicas on an eDirectory server? (Choose 2.)

A.A server can hold both full replicas and filtered replicas.

B.Each replica on a server can be configured with its own filter.

C.A replica filter cannot be modified; it must be removed and then recreated.

D.Servers running eDirectory versions earlier than 8.5 cannot synchronize with filtered replicas.

E.The master replica of a partition being filtered must reside on a server running eDirectory 8.5 or later.

Answer:A E

11.Which is a component of eDirectory 8.6?

A.A 0.DSB file to hold index information about the database

B.Streams files used to hold information such as login scripts

C.Novell's transaction tracking system to ensure database integrity

D.Files named 01.DB, 02.DB, etc. to hold all database record information

Answer:B

12.Which statements are true regarding iFolder? (Choose 2.)

A.The iFolder client can be installed on any UNIX workstation.

B.The iFolder client can be installed on any Windows workstation.

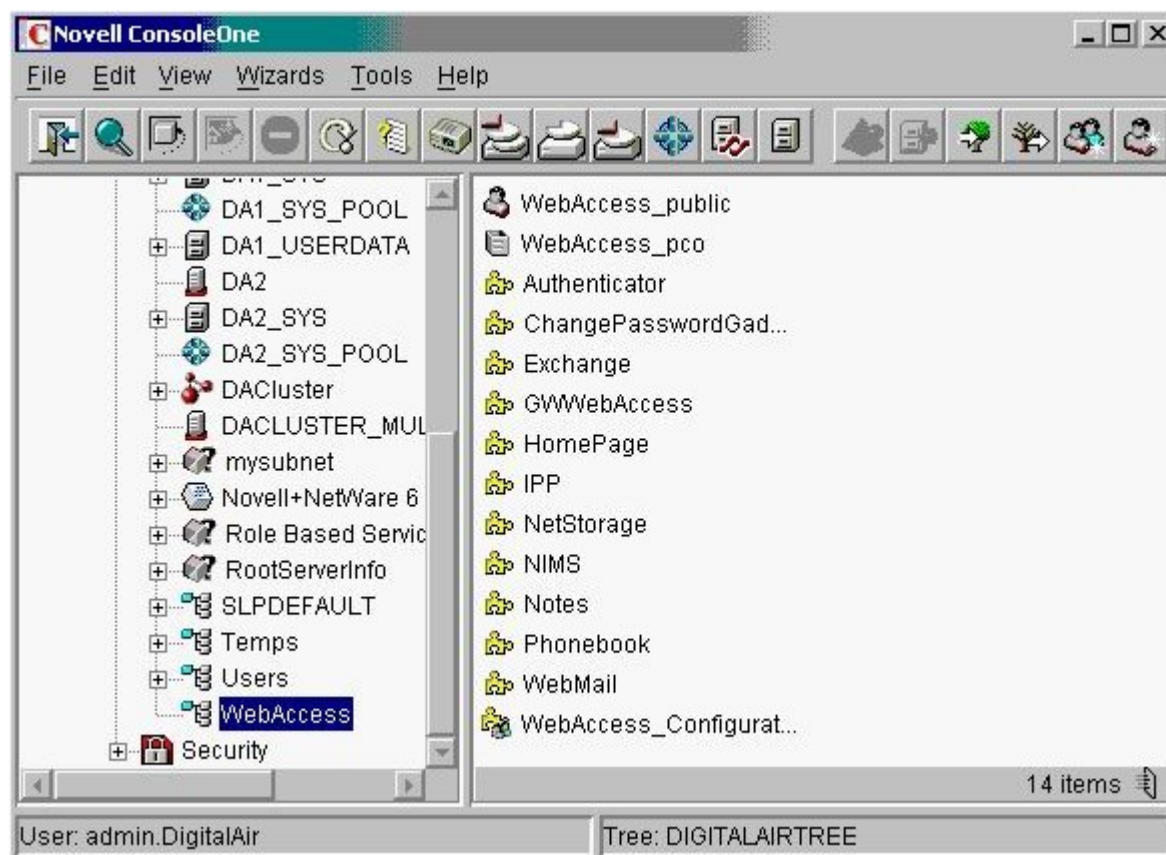
C.The iFolder client can be installed on any Macintosh workstation.

D.Applications associated with the files in the iFolder directory must be installed on the local workstation.

E.The iFolder directory must be the root directory of whichever workstation the client is installed on.

Answer: B D

13. Click the Point-and-Click button to begin. Click the object you use to configure WebAccess gadgets.



Answer:

14. In which situation will you be able to restore a deleted NSS volume?

- A. When its associated storage pool is deleted
- B. When both the volume and its storage pool are deleted
- C. When the volume is deleted, but the storage pool is not
- D. When only the volume is deleted and the Purge Delay time has not passed
- E. When its associated storage pool is deleted and the Purge Delay time has not passed

Answer: D

15. What is the minimum amount of RAM required to install NetWare 6?

- A. 56 MB
- B. 128 MB
- C. 256 MB
- D. 512 MB
- E. 1 GB

Answer: C

16. When performing a health check after installing eDirectory 8.6, how can you check to see if there are any obituaries?

- A. Use ConsoleOne> Tools> Obituary Check
- B. Use ConsoleOne> Tools> Partition Status
- C. Set DSTRACE=+S and Set DSTRACE=*H
- D. Set DSTRACE=+OBIT and Set DSTRACE=*O

E.Set DSTRACE=+BLINK and Set DSTRACE=*B

F.Use DSREPAIR -A> Advanced Options> Check External References

G.Use DSREPAIR -A> Advanced Options> Report Synchronization Status

[Answer:F](#)

17.Which NetWare 6 user access component allows a user to log in to a NetWare server from a Macintosh workstation without the use of the NetWare client?

A.NFAP

B.iFolder

C.NetDrive

D.NetStorage

E.Web Access

[Answer:A](#)

18.Which eDirectory database file could hold a user's login script information?

A.0.DB

B.NDS.DB

C.NDS.01

D.NDS*.LOG

E.00000110.NDS

[Answer:E](#)

19.When adding a new site to NetDrive, you did not specify a protocol in the Site Address/URL field. Which protocol is used by default?

A.FTP

B.TFTP

C.HTTP

D.HTTPS

E.iFolder

F.WebDAV

[Answer:A](#)

20.You are performing an eDirectory health check prior to installing NetWare 6 and eDirectory 8.6. Which command displays schema synchronization information?

A.SET DSTRACE=+S

B.SET DSTRACE=*S

C.SET DSTRACE=*SS

D.SET DSTRACE=*SSA

E.SET DSTRACE=+SCHEMA

F.SET DSTRACE=*SCHEMA

[Answer:E](#)